

Ordering information

① **SS5** - ② ③ - ④

① **Current Rating** - 5A-2500A

② **Electrical Schematic**
1B,1E,1F,1G,1H,1K,1L,2A,2B,3A

③ **Type of case**
A1,A2,A3,A5,H2,H3,H7,H8,H9

Output terminal

Q ; fast-on(6.3mm)
S ; screw lug
W ; with wire

Components table

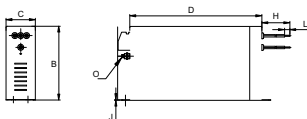
Pin	Current rating (at 50°C)	Leakage current (@25°C)	Power rate (W)	L (mm)	Cx1 (μF)	Cx2 (μF)	Cx3 (μF)	Cx4 (μF)	Cx5 (μF)	R1 (Ω)	R2 (Ω)	Input connections	Output connections				
1F10S-0400	7	18	9	4.5	1	0.47	1	1	0.47	1.5	0.08	✓	✓	✓	✓	✓	✓
1G50S-0400	18	30	3	1	0.68	1	1	0.47	1.5	0.08	✓	✓	✓	✓	✓	✓	✓
3055S-0400	30	26.5	19	2	1	0.68	1	1	1.5	0.08	✓	✓	✓	✓	✓	✓	✓
4205S-0400	42	28.2	30	1.5	1	0.68	1	1	1.5	1.5	0.08	✓	✓	✓	✓	✓	✓
6055S-0400	55	28.2	31	1.1	1	0.68	1	1	1.5	1.5	0.08	✓	✓	✓	✓	✓	✓
7555S-0400	75	28.2	23	0.9	1	0.68	1	1	1.5	1.5	0.08	✓	✓	✓	✓	✓	✓
10055S-0400	100	28.2	41	0.9	1	0.68	1	1	1.5	1.5	0.08	✓	✓	✓	✓	✓	✓
13055S-0400	130	32.8	50	0.6	2.2	1	1	1	1.5	1.5	0.08	✓	✓	✓	✓	✓	✓
18055S-1000	180	32.8	68	0.13	2.2	1	1	1	1.5	1.5	0.08	✓	✓	✓	✓	✓	✓
25055S-1000	250	32.8	75	0.13	3.3	3.3	1	1	1.5	1.5	0.08	✓	✓	✓	✓	✓	✓

* please call for other's combinations

Mechanical Dimension

unit: $\frac{\text{mm}}{\text{inch}}$

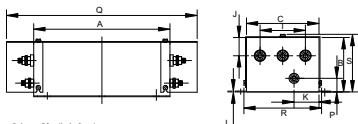
H2 case



Dimensions:

	1A	16A	35A	42A	55A	Tol.*
A	250	300	320	320	320	±1.0
B	150±0.3	150±0.3	150±0.3	150±0.3	150±0.3	±1.0
C	50	55	60	70	80	±0.5
D	35±0.3	35±0.3	35	38	35	±1.0
E	200	200	220	214	214	±0.5
F	25	30	35	45	55	±0.3
G	6.5	6.5	6.5	6.5	6.5	±0.2
H	300	300	400	500	500	±1.5
J	16±1.0	16±1.0	16±1.0	1.8	1.5	±0.2
L	9	9	9	12	12	±1.0
O	M5	M5	M5	M6	M6	-
P	AWG14	AWG14	AWG14	AWG16	AWG16	-

A5 case

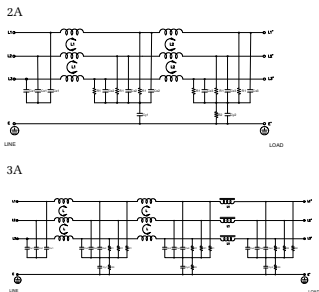


* please call for other's alternatives

Dimensions:

	16A	35A	42A	55A	Tol.*
A	300	300	300	310	±1.0
B	150	150	150	150	±1.0
C	100	100	100	110	±1.0
D	100	100	100	110	±1.0
E	100	100	100	110	±1.0
F	100	100	100	110	±1.0
G	50	50	50	50	±1.0
H	100	100	100	110	±1.0
J	100	100	100	110	±1.0
K	200	200	200	210	±1.0
L	400	400	400	410	±1.0
M	17.5	17.5	17.5	18	±1.0
N	17.5	17.5	17.5	18	±1.0
P	17.5	17.5	17.5	18	±1.0

Schematic type



* please call for other's alternative