

Ordering information

① SS7 ② - ③ ④ - ⑤

① Current Rating - 01A-16A

② Schematic type

Standard (empty)

B: without Cx

D: Cx behind of L

E: without L, Cx & Cy only

③ Case type

SC; for code A~E

SD; for code F~M

④ Components table

Refer components table

⑤ Output terminal type

Q: fast-on(6.3mm)

W: with wire

Components table

Rating	Code	Cx(μF)	Cy(pF)	R(ohm)	L(mH)	Max. Leakage(A)			Rating Volts		Hi-pot test Volts	
						115VAC	230VAC	VAC	Rz	L-NG	L-N	
10A	A	0.15	4700	1M	0.5	0.2	0.4	115/250	50/80	2250VDC	1450VDC	
	B	0.15	10000	1M	0.5	0.25	0.5	115/250	50/80	2250VDC	1450VDC	
	C	0.47	10000	0.68M	1.0	1.0	2.0	115/250	50/80	2250VDC	1450VDC	
	D	0.47	25000	0.68M	0.5	2.5	5.0	115/250	50/80	2250VDC	1450VDC	
	E	0.47	27000	0.68M	0.5	2.7	5.4	115/250	50/80	2250VDC	1450VDC	
	F	1	2700	0.33M	0.5	0.25	0.5	115/250	50/80	2250VDC	1450VDC	
16A	G	1	2700	0.33M	2.0	0.25	0.5	115/250	50/80	2250VDC	1450VDC	
	H	0.25	27000	1M	1.0	2.7	5.4	115/250	50/80	2250VDC	1450VDC	
	I	0.68	27000	0.47M	1.0	2.7	5.4	115/250	50/80	2250VDC	1450VDC	
	J	0.47	4700	0.68M	1.0	0.5	1.0	115/250	50/80	2250VDC	1450VDC	
	K	0.47	10000	0.68M	1.0	1.0	2.0	115/250	50/80	2250VDC	1450VDC	
	L	0.47	25000	0.68M	1.0	2.5	5.0	115/250	50/80	2250VDC	1450VDC	
	M	0.47	27000	0.68M	1.0	2.7	5.4	115/250	50/80	2250VDC	1450VDC	

* please call for other's combinations

Insertion loss table

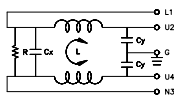
(In 50ohm system according IEC/CISPR No.17)

Rating	Code	Common Model(L, 0.1m Mhz)										DIR Model(L, 1.0m Mhz)																					
		.15	.5	1	5	10	30	.15	.5	1	5	10	30	.15	.5	1	5	10	30														
10	A	16	25	36	42	47	29	11	22	29	42	33	22																				
	B	17	30	36	51	53	33	11	22	30	41	39	24																				
	C	22	36	50	40	48	25	20	38	44	60	56	37																				
	D	22	34	49	45	36	24	23	38	46	59	46	33																				
	E	22	34	49	40	36	24	24	40	47	61	46	36																				
	F	28	44	46	33	30	24	15	22	26	36	46	33																				
16	G	28	45	46	40	36	22	25	31	34	44	51	36																				
	H	15	28	36	57	63	24	16	28	36	59	43	24																				
	I	25	39	53	46	40	24	30	45	52	61	52	33																				
	J	22	35	52	37	34	23	21	31	35	48	56	33																				
	K	22	35	52	37	44	23	25	36	42	57	53	34																				
	L	22	36	52	53	42	23	29	45	51	61	54	37																				

SS7 series SC/SD case | with bracket type

Schematic type

Standard

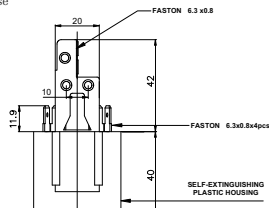


* please call for other's alternates

Mechanical Dimension

unit: mm
inch

SC case



SD case

