

EMI Filter - IEC Inlet Filters



SS2 series P case | PC Board mountable type

Ordering information

1 SS2 2 -P 3 4 5

1 Current Rating - 01,02,03,06,08,10,15

15 ; 15A for UL, CUL approved, 10A for VDE, CQC approved

2 Schematic type

Standard(empty),B,D

3 Components table

Refer components table

2 Ground choke (options)

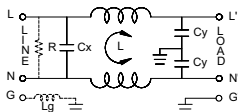
G ; Lg=100uH

3 Bleeder resistor (options)

R ; R=1M ohm; 1/4W min.

Schematic type

Standard



R:options Lg:options

* please call for other's alternates

Insertion loss table

(In 50ohm system according IEC/CISPR No.17)

Code	Rating	Comm. Mode(L-G)in MHz						Diff. Mode(L-N)in MHz					
		.15	.5	1	5	10	30	.15	.5	1	5	10	30
S	1A	34	38	40	32	26	11	8	25	37	71	62	12
	2A	29	32	55	48	49	51	8	23	34	68	64	14
	3A	28	36	39	45	48	39	8	19	27	58	65	15
	6A	18	24	28	44	50	47	8	18	26	43	51	31
	8A	20	26	30	44	47	40	8	18	24	65	59	22
	10A	8	14	18	33	41	39	8	18	25	29	38	21
10/15A	7	14	19	34	40	38	7	17	23	39	47	27	
B	1A	29	33	47	53	57	41	8	23	35	73	68	14
	2A	28	37	44	52	56	41	8	19	27	74	59	17
	3A	25	33	46	53	57	44	8	19	29	63	62	13
	6A	19	29	36	49	55	46	8	18	23	50	54	24
	8A	20	24	26	27	25	15	8	18	24	58	57	21
	10A	11	19	24	41	63	36	8	18	24	51	46	25
10/15A	7	15	21	37	48	38	7	17	23	39	48	27	

Components table

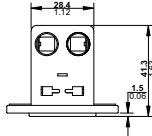
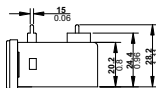
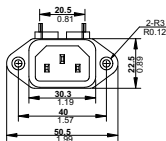
Code	Cv(μF)	Cylip(F)	Inductance L=mmH x 2 in Amps										Max. Leakage(mA)	Rating Volts	Hi-pot test Volts	
			1A	2A	3A	6A	8A	10A	10A/15A	115VAC	250VAC	VAC			Hz	L-N-G
S	0.1	2200	6.5	3.8	2.5	0.8	1.05	0.2	0.2	0.2	0.4	115/250	50/60	2250VDC	1450VDC	
B	0.1	3300	3.7	2.7	1.8	0.8	1.05	0.3	0.2	0.25	0.5	115/250	50/60	2250VDC	1450VDC	

* please call for other's combinations

Mechanical Dimension

unit: mm

inch



SUGGESTED PCB LAYOUT

