



Standard case

Ordering information

1 **SSI** 2 - 3 4 5 - 6 (7)

1 **Current Rating** - 01,02,03,04,06,08,10,13,15

13 ; 13A for UL approved, 10A for Semko, VDE approved
15 ; 15A for UL approved, 10A for Semko, VDE approved

2 **Schematic type**

A, C, G, I, L, N

3 **Components table**

Refer components table

4 **Ground choke** (options)

G ; Lg=100uH
G1 ; Lg=6uH
G2 ; Lg=180uH

5 **Bleeder resistor** (options)

R ; R=1M ohm; 1/4W min.

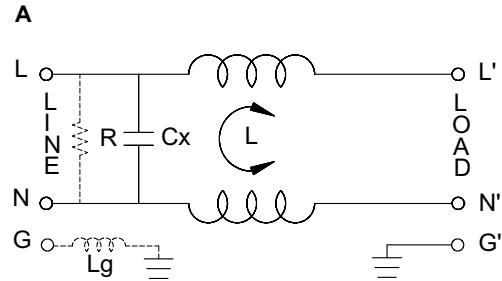
6 **Output terminal type**

Q ; fast-on(6.3mm)
S ; solder(4mm)
W ; with wire

7 **Case type**

S, B, SA

Schematic type



R:options Lg:options

* please call for other's alternates

Components table

Code	Cx(uF)	Inductance L=mH x 2 in Amps							
		1A	2A	3A	6A	8A	10A	15A	20A
A	0.1	6.5	3.8	2.5	0.8	1.05	0.2	0.2	X

* please call for other's combinations

Insertion loss table

(In 50ohm system according IEC/CISPR No.17)

Code	Rating	Comm.Mode(L-G)in MHz						Diff.Mode(L-L)in MHz					
		.15	.5	1	5	10	30	.15	.5	1	5	10	30
A	1A	34	38	39	32	16	21	9	26	37	62	51	11
	2A	29	32	34	30	19	16	8	23	34	60	48	13
	3A	28	35	37	28	22	19	8	19	28	52	44	12
	6A	18	22	24	27	25	18	8	18	26	52	45	27
	8A	20	24	26	27	25	14	8	19	26	58	47	20
	10A	8	13	15	17	16	14	8	18	25	32	28	24
	15A	7	12	15	16	14	11	7	17	24	41	32	23

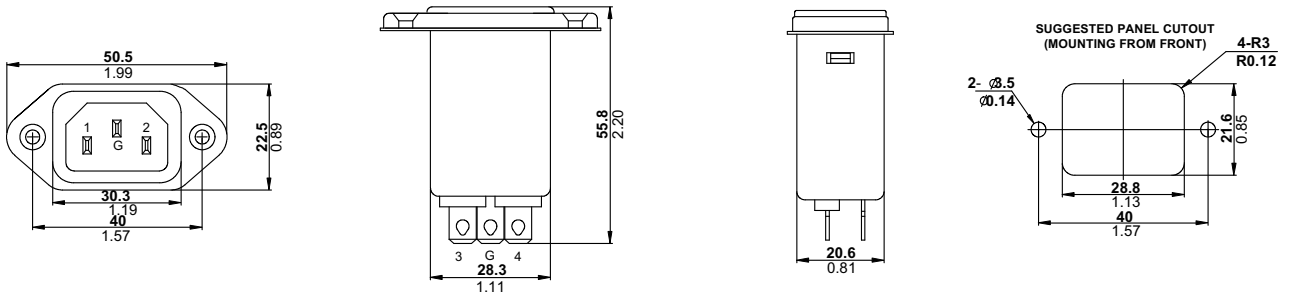
* please call for other's combinations



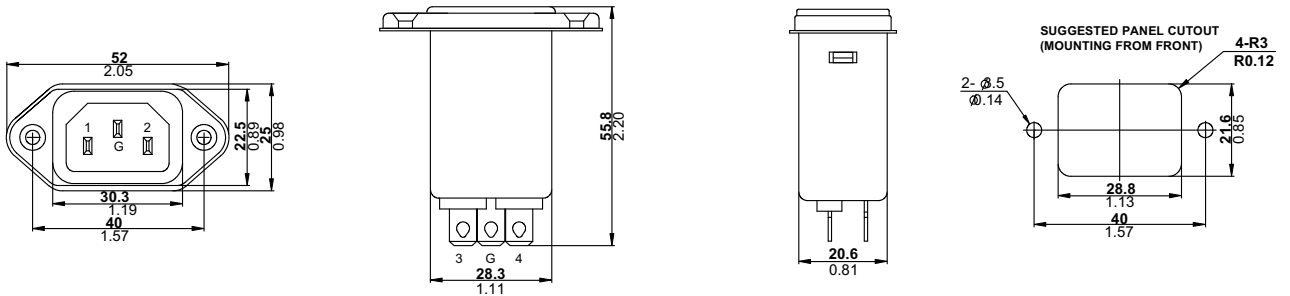
Standard case

■ Mechanical Dimension unit: $\frac{\text{mm}}{\text{inch}}$

S case



B case



SA case

