

# EMI Filter - IEC Inlet Filters



SS2 series L-W case | Right angle type  
\*medical grade

## Ordering information

1 SS2 2 - L 3 4 5 - W

### 1 Current Rating - 01,02,03,06,08,10,15

15 ; 15A for UL, CUL approved, 10A for VDE, CQC approved

### 2 Schematic type

A,C

### 2 Ground choke (options)

G ; L<sub>g</sub>=100uH

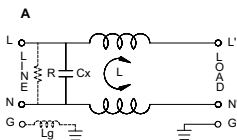
### 3 Components table

Refer components table

### 3 Bleeder resistor (options)

R ; R=1M ohm; 1/4W min.

## Schematic type



R:options L<sub>g</sub>:options

\* please call for other's alternates

## Insertion loss table

(In 50ohm system according IEC/CISPR No.17)

Code	Rating	Comm.Mode(L <sub>c</sub> )in MHz						Diff.Mode(L <sub>d</sub> )in MHz					
		.15	.5	1	5	10	20	.15	.5	1	5	10	20
C	1A	37	47	44	27	30	15	10	28	40	73	47	30
	2A	30	35	36	32	38	17	9	26	38	63	57	17
	3A	28	36	37	36	26	19	8	22	33	63	56	26
	6A	18	25	28	29	26	18	8	19	27	36	35	28
	8A	20	24	26	27	25	14	8	19	26	45	42	20
	10A	9	13	15	16	16	13	8	18	23	29	29	29
15A	8	13	15	16	14	11	8	18	25	30	31	28	

\* please call for other's combinations

## Components table

Code	Cx(μF)	Inductance L=μH x 2 in Amps							
		1A	2A	3A	6A	8A	10A	15A	20A
C	0.1	6.5	3.8	2.5	0.8	1.05	0.2	0.2	X

\* please call for other's combinations

## Mechanical Dimension

unit: mm  
inch

