

EMI Filter - IEC Inlet Filters



SS2 series L-W1 case | Right angle type
*medical grade

Ordering information

1 SS2 2 - L 3 4 5 - W1

1 Current Rating - 01,02,03,06,08,10,15

15 ; 15A for UL, CUL approved, 10A for VDE, CQC approved

2 Ground choke (options)

G ; L_g=100uH

2 Schematic type

A,C

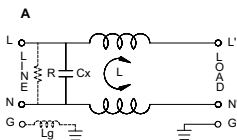
3 Bleeder resistor (options)

R ; R=1M ohm; 1/4W min.

3 Components table

Refer components table

Schematic type



R:options L_g:options

* please call for other's alternates

Insertion loss table

(In 50ohm system according IEC/CISPR No.17)

Code	Rating	Comm. Mode(L-G)in MHz						Diff. Mode(L-L)in MHz					
		.15	.5	1	5	10	30	.15	.5	1	5	10	30
C	1A	37	47	44	27	30	15	10	28	40	73	47	36
	2A	30	35	36	32	38	17	9	26	38	63	57	17
	3A	28	36	37	36	26	19	8	22	33	63	56	20
	6A	18	25	28	29	26	18	8	19	27	36	35	28
	8A	20	24	28	27	25	14	8	19	26	45	42	25
	10A	9	13	15	16	16	13	8	18	23	29	29	29
	15A	8	13	15	16	14	11	8	18	25	30	31	28

* please call for other's combinations

Components table

Code	Cx(uF)	Inductance L(mH) x 2 in Amps							
		1A	2A	3A	6A	8A	10A	15A	20A
C	0.1	6.5	3.8	2.5	0.8	1.05	0.2	0.2	X

* please call for other's combinations

Mechanical Dimension

unit: mm
inch

