

## Ordering information

1 SS2 2 -P 3 4 5

### 1 Current Rating - 01,02,03,06,08,10,15

15 ; 15A for UL, CUL approved, 10A for VDE, CQC approved

### 2 Schematic type

A,C

### 3 Components table

Refer components table

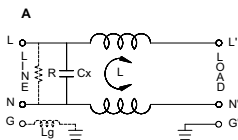
### 4 Ground choke (options)

G ; Lg=100uH

### 5 Bleeder resistor (options)

R ; R=1M ohm; 1/4W min.

## Schematic type



R:options Lg:options

\* please call for other's alternates

## Insertion loss table

(In 50ohm system according IEC/CISPR No.17)

Code	Rating	Comm. Mode(L-G)in MHz						Diff. Mode(L-N)in MHz					
		.15	.5	1	5	10	30	.15	.5	1	5	10	30
A	1A	34	38	39	33	16	21	9	26	37	62	51	11
	2A	29	32	34	31	19	16	8	23	34	60	48	13
	3A	28	35	37	29	22	19	8	19	28	52	44	12
	6A	18	22	24	28	25	18	8	18	26	52	45	27
	8A	20	24	28	28	25	14	8	19	26	58	47	25
	10A	8	13	15	18	16	14	8	18	25	32	28	24
15A	7	12	15	17	14	11	7	17	24	41	32	23	

\* please call for other's combinations

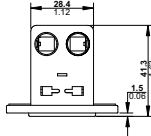
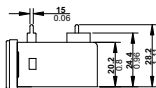
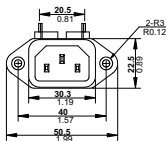
## Components table

Code	Cx(uF)	Inductance LmH x 2 in Amps							
		1A	2A	3A	6A	8A	10A	15A	20A
A	0.1	6.5	3.8	2.5	0.8	1.05	0.2	0.2	X

\* please call for other's combinations

## Mechanical Dimension

unit: mm  
inch



SUGGESTED PCB LAYOUT

