

# EMI Filter - Power Entry Module



## Ordering information

① SS3 ② - ③ ④ L ⑤ ⑥ ⑦ - ⑧

## ① Current Rating - 01,02,03,04,06,6.3,08,10

1~6.3; for VDE, CQC approved  
1~10; for UL, CUL approved

## ② Schematic type

Standard(empty),B,D,E

## ③ Additional schematic (options)

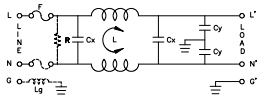
A; additional Cx behind of choke

## ④ Function type

1; single fuse  
2; dual fuses

## Schematic type

### Standard



\* please call for other's alternates

SS3 series L case | socket with fuse holder

## ⑤ Components table

Refer components table

## ⑥ Ground choke (options)

G; Lg=100uH  
G1; Lg=120uH  
G2; Lg=400uH

## ⑦ Bleeder resistor (options)

R; R=1M ohm; 1/4W min.

## ⑧ Output terminal type

Q; fast-on(6.3mm)  
S; solder(4mm)  
W; with wire

## Insertion loss table

(In 50ohm system according IEC/CISPR No.17)

Code	Rating	Comm. Mode(L-G)in MHz										Diff Mode(L-N)in MHz														
		.15	.5	1	5	10	30	.15	.5	1	5	10	30													
S	1A	34	38	40	32	26	11	8	25	37	71	62	12													
	2A	29	32	55	48	49	51	8	23	34	68	64	14													
	3A	28	36	39	45	48	39	8	19	27	58	65	15													
	4A	22	27	30	48	54	47	8	19	28	66	72	34													
	6A	19	24	28	44	50	47	8	18	26	43	51	31													
	6.3A	18	24	28	44	50	47	8	18	26	43	51	31													
	8A	20	26	30	44	47	40	8	18	24	65	59	22													
	10A	8	14	18	33	41	39	8	18	25	29	38	31													
	B	1A	29	33	47	53	57	41	8	23	35	73	58	14												
		2A	28	37	44	52	56	41	8	19	27	74	59	17												
3A		25	33	46	53	57	41	8	19	29	63	62	13													
4A		19	24	27	43	53	38	8	18	25	57	60	32													
6A		19	29	36	49	55	46	8	18	23	50	54	24													
6.3A		19	29	36	49	55	46	8	18	23	50	54	24													
8A		20	24	26	27	25	15	8	18	24	58	57	21													
10A		11	19	24	41	53	36	8	18	24	51	46	25													

## Components table

Code	Cx(uF)	Cy(uF)	Inductance LmH x 2 in Amps										Max. Leakage(mA)		Rating Volts		Hi-pot test Volts	
			1A	2A	3A	4A	6A	6.3A	8A	10A	115VAC	250VAC	VAC	Hz	L-N/G	L-N	1450VDC	1450VDC
S	0.1	2200	6.5	3.8	2.5	1.6	0.8	0.8	1.05	0.3	0.2	0.4	115/250	50/50	225VDC	225VDC	1450VDC	1450VDC
B	0.1	3300	3.7	2.7	1.8	1.3	0.8	0.8	1.05	0.3	0.25	0.5	115/250	50/50	225VDC	225VDC	1450VDC	1450VDC

\* please call for other's combinations

## Mechanical Dimension

unit: mm  
inch

