

Ordering information

①SS3 ②-③④L⑤⑥⑦-⑧(S)

① Current Rating - 01,02,03,04,06,6.3,08,10

1~6.3; for VDE, CQC approved
1~10 ; for UL, CUL approved

② Schematic type

Standard(empty),B,D,E

③ Additional schematic (options)

A; additional Cx behind of choke

④ Function type

1; single fuse
2; dual fuses

SS3 series L(S) case | socket with fuse holder

⑤ Components table

Refer components table

⑥ Ground choke (options)

G ; L_g=100uH
G1 ; L_g=120uH
G2 ; L_g=400uH

⑦ Bleeder resistor (options)

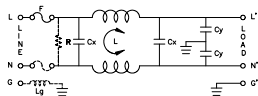
R ; R=1M ohm; 1/4W min.

⑧ Output terminal type

Q ; fast-on(6.3mm)
S ; solder(4mm)
W ; with wire

Schematic type

Standard



* please call for other's alternates

Insertion loss table

(In 50ohm system according IEC/CISPR No.17)

Code	Rating	Comm. Mode(L-G)in MHz						Diff. Mode(L-L)in MHz						
		.15	.5	1	5	10	30	.15	.5	1	5	10	30	
S	1A	34	38	40	32	26	11	8	25	37	71	62	12	
	2A	29	32	35	48	49	51	8	23	34	68	64	14	
	3A	28	36	39	45	48	39	8	19	27	58	65	15	
	4A	22	27	30	48	54	47	8	19	28	66	72	34	
	6A	18	24	28	44	50	47	8	18	28	43	51	31	
	6.3A	18	24	28	44	50	47	8	18	28	43	51	31	
	8A	20	26	30	44	47	40	8	18	24	65	59	22	
	10A	8	14	18	33	41	39	8	18	25	29	38	31	
	B	1A	29	33	47	53	57	41	8	23	35	73	58	14
		2A	28	37	44	52	56	41	8	19	27	74	59	17
3A		25	33	46	53	57	41	8	19	29	63	62	13	
4A		19	24	27	43	53	38	8	18	25	57	60	32	
6A		19	29	36	49	55	46	8	18	23	50	54	24	
6.3A		19	29	36	49	55	46	8	18	23	50	54	24	
8A		20	24	26	27	25	15	8	18	24	58	57	21	
10A		11	19	24	41	53	36	8	18	24	51	46	25	

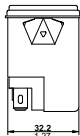
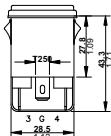
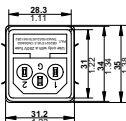
Components table

Code	Cx(uF)	Cy(uF)	Inductance LmH x 2 in Amps										Max. Leakage(mA)		Rating Volts		Hi-pot test Volts	
			1A	2A	3A	4A	6A	6.3A	8A	10A	115VAC	250VAC	VAC	Hz	L-N-G	L-N		
S	0.1	2200	6.5	3.8	2.5	1.6	0.8	0.8	1.05	0.3	0.2	0.4	115/250	50/60	2250VDC	1450VDC		
B	0.1	3300	3.7	2.7	1.8	1.3	0.8	0.8	1.05	0.3	0.25	0.5	115/250	50/60	2250VDC	1450VDC		

* please call for other's combinations

Mechanical Dimension

unit: mm
inch



SUGGESTED PANEL CUTOUT
(MOUNTING FROM FRONT)

