

**SS3 series P case | socket with fuse holder**

## Ordering information

1 **SS3** 2 - 3 4 **P** 5 6 7 - 8

### 1 Current Rating - 01,02,03,04,06,6.3,08,10

1~6.3; for VDE, CQC approved  
1~10 ; for UL, CUL approved

### 2 Schematic type

Standard(empty),B,D,E

### 3 Additional schematic (options)

A; additional Cx behind of choke

### 4 Function type

1; single fuse  
2; dual fuses

### 5 Components table

Refer components table

### 6 Ground choke (options)

G ; Lg=100uH  
G1 ; Lg=120uH  
G2 ; Lg=400uH

### 7 Bleeder resistor (options)

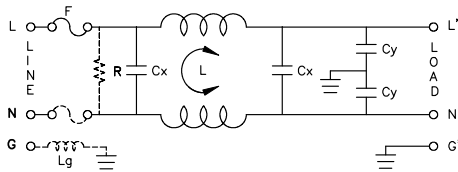
R ; R=1M ohm; 1/4W min.

### 8 Output terminal type

Q ; fast-on(6.3mm)  
S ; solder(4mm)  
W ; with wire

## Schematic type

### Standard



\* please call for other's alternates

## Insertion loss table

(In 50ohm system according IEC/CISPR No.17)

Code	Rating	Comm.Mode(L-G)in MHz						Diff.Mode(L-L)in MHz						
		.15	.5	1	5	10	30	.15	.5	1	5	10	30	
S	1A	34	38	40	32	26	11	8	25	37	71	62	12	
	2A	29	32	55	48	49	51	8	23	34	68	64	14	
	3A	28	36	39	45	48	39	8	19	27	58	65	15	
	4A	22	27	30	48	54	47	8	19	28	66	72	34	
	6A	18	24	28	44	50	47	8	18	26	43	51	31	
	6.3A	18	24	28	44	50	47	8	18	26	43	51	31	
	8A	20	26	30	44	47	40	8	18	24	65	59	22	
	10A	8	14	18	33	41	39	8	18	25	29	38	31	
	B	1A	29	33	47	53	57	41	8	23	35	73	58	14
		2A	28	37	44	52	56	41	8	19	27	74	59	17
3A		25	33	46	53	57	41	8	19	29	63	62	13	
4A		19	24	27	43	53	38	8	18	25	57	60	32	
6A		19	29	36	49	55	46	8	18	23	50	54	24	
6.3A		19	29	36	49	55	46	8	18	23	50	54	24	
8A		20	24	26	27	25	15	8	18	24	58	57	21	
10A		11	19	24	41	53	36	8	18	24	51	46	25	

## Components table

Code	Cx(uF)	Cy(pF)	Inductance L=mH x 2 in Amps								Max. Leakage(mA)		Rating Volts		Hi-pot test Volts	
			1A	2A	3A	4A	6A	6.3A	8A	10A	115VAC	250VAC	VAC	Hz	L,N-G	L-N
S	0.1	2200	6.5	3.8	2.5	1.6	0.8	0.8	1.05	0.3	0.2	0.4	115/250	50/60	2250VDC	1450VDC
B	0.1	3300	3.7	2.7	1.8	1.3	0.8	0.8	1.05	0.3	0.25	0.5	115/250	50/60	2250VDC	1450VDC

\* please call for other's combinations

## Mechanical Dimension

unit:  $\frac{\text{mm}}{\text{inch}}$

