

Ordering information
1 SS4 2 - 1AG1-3 4 - 0
1 Current Rating - 10, 15, 20, 30A

2 Additional Schematic

B; without Cx
 D; Cx behind of L
 E; without L

3 Special Device - (empty), add suffix B (options)

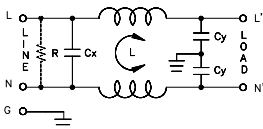
-(empty); Standard
 B; for Cx=0.1uF; Cy=3300pF

4 Bleeder resistor - (empty), add suffix R (options)

R ; R=1M ohm

5 Output terminal type

Q ; fast-on(6.3mm)
 S ; screw

Schematic type
1A

Components table

| Code | Case | Cx(uF) | Cy(pF) | Inductance L-wiret a 2 In Amps | | | |
|------|------|--------|--------|--------------------------------|-----|-----|-----|
| | | | | 10A | 15A | 20A | 30A |
| 1A | G1 | 0.033 | 2200 | 4 | 3 | 2 | X |
| | | 0.1 | 3300 | 1.5 | 0.9 | 0.3 | 0.3 |
| | | 0.1 | 4700 | 1.5 | 0.9 | 0.3 | 0.3 |

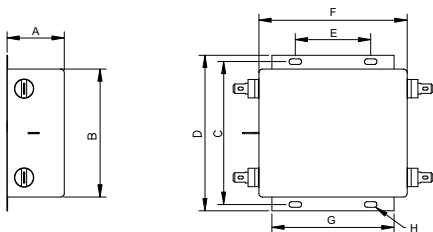
Insertion loss table

(In 50ohm system according IEC/CISPR No.17)

| Case | Cx(uF) | Cy(pF) | Rating | Comm. Mode(L-G)in MHz | | | | | | Diff Mode(L-L)in MHz | | | | | |
|------|--------|--------|--------|-----------------------|----|----|----|----|----|----------------------|----|----|----|----|----|
| | | | | .15 | .5 | 1 | 5 | 10 | 30 | .15 | .5 | 1 | 5 | 10 | 30 |
| G1 | 0.033 | 2200 | 10A | 26 | 30 | 54 | 46 | 48 | 52 | 1 | 11 | 21 | 63 | 60 | 14 |
| | | | 15A | 26 | 30 | 47 | 48 | 50 | 47 | 1 | 9 | 30 | 71 | 57 | 20 |
| | | | 20A | 21 | 26 | 33 | 43 | 46 | 45 | 1 | 7 | 10 | 58 | 59 | 20 |

* please call for other's combinations

Mechanical Dimension

 unit: $\frac{mm}{inch}$
G1 case


| Case | G1 |
|------|------|
| A | 38.6 |
| B | 86.4 |
| C | 95.3 |
| D | 105 |
| E | 50.9 |
| F | 100 |
| G | 82.5 |
| H | 44.5 |