

Features

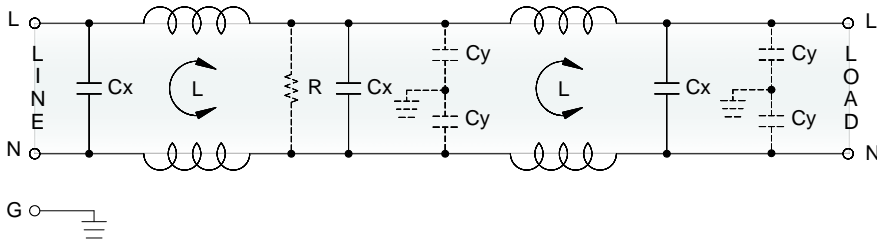
- High conducted attenuation performance
- DIP PCB filter
- Current rating 1A~20A
- With good HF coupling to the equipment housing
- Two-stage circuit design

Marketing Applications

- Surveillance system
- Test and measurement equipment
- Rack mounting equipment
- EDP and office equipment
- IPC

Electrical Schematic

● 42DC1S01

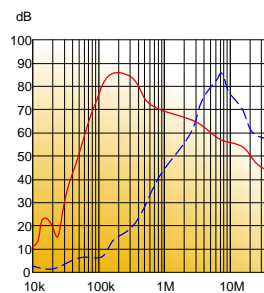


Filter Selection Table ●

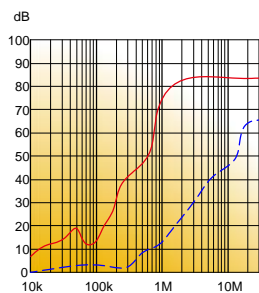
Filter Project No.	Rated Current @50°C [A]	Leakage Current @250VAC/50Hz [μA]	Inductance @10KHz,0.25V [mH]	Capacitance Cx [μF] Cy [nF]	
42DC1S01:					
0142DC1S01	1	1000	30	1	4.7
0342DC1S01	3	1000	15	1	4.7
0642DC1S01	6	1000	6	1	4.7
1042DC1S01	10	1000	4	1	4.7
1542DC2S01	15	1000	3	1	4.7
2042DC2S01	20	1000	2	1	4.7

Filter Attenuation Insertion loss (dB) in 50 ohm system CISPR 17 (for reference only)

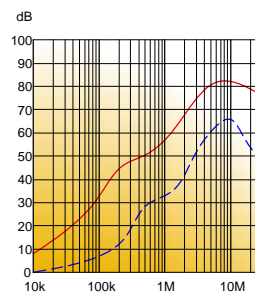
■ 1A~3A



■ 6A~10A



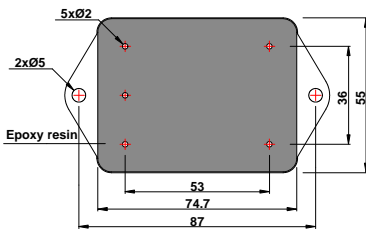
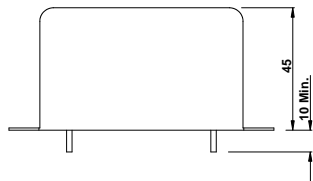
■ 20A



Common mode / Asymmetric (L-G) ————
 Differential mode / Symmetric (L-L) - - - - -

Mechanical Drawing (unit: mm)

• 42DC1S01



Suggested PCB Layout

