

Features

- Ultra-high conducted attenuation performance
- Compact design, lower cost
- With IEC320 AC socket
- Current rating 1A~15A
- Practical solution for general devices

Marketing Applications

- Conferencing system
- Light sensor system
- Auxiliary power supply
- Endoscopy light source
- Label printer

Numbering System

1 SS1 **2** - **3** **4** **5** - **6** (T)

1 Rated current

01,03,06,10,15

2 Electrical schematic

M: excellent performance

3 Components value (refer Filter selection table)

DA: $C_x=0.1\mu F$, $C_y=2.2nF$

DB: $C_x=0.1\mu F$, $C_y=3.3nF$

4 Grounded choke (optional)

G: $L_g=100\mu H$

5 Bleeder resistor (optional)

R: $R=1M\ \text{ohm}$; $1/4W\ \text{min.}$

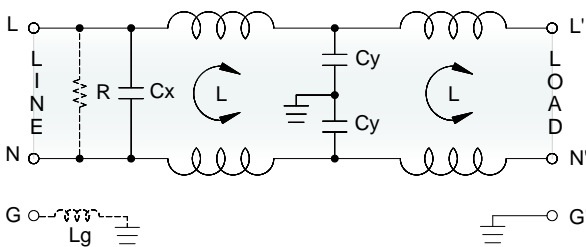
6 Output connections (refer Output terminal)

Q: fast-on tab (6.3mm)

W: with wired (100mm)

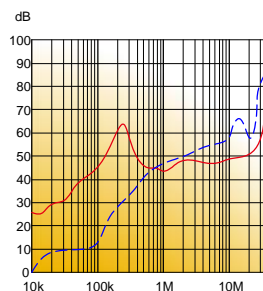
Electrical Schematic

● **M**: excellent performance

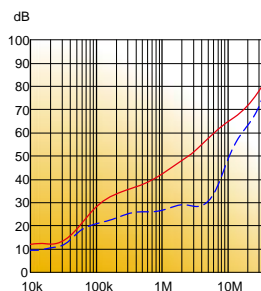


Filter Attenuation

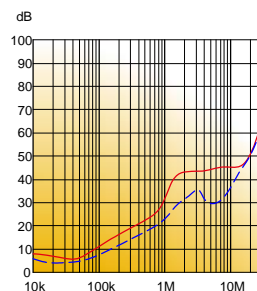
■ 1A~3A



■ 6A~10A





■ 15A



Common mode / Asymmetric (L-G) ————
Differential mode / Symmetric (L-L) - - - -

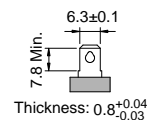
Filter Selection Table ●

Filter Part No.	Rated Current @50°C [A]	Leakage Current @250VAC/50Hz [μA]	Inductance @10KHz,0.25V [mH]	Capacitance		Output terminal	
				Cx [μF]	Cy [nF]		
M: excellent performance							
01SS1M-DA..	1	450	3+1.1	0.1	2.2	-Q	-W
03SS1M-DA..	3	450	3+1.1	0.1	2.2	-Q	-W
06SS1M-DA..	6	450	1.5+0.8	0.1	2.2	-Q	-W
10SS1M-DA..	10	450	1+0.3	0.1	2.2	-Q	-W
15SS1M-DA..	15	450	0.5+0.2	0.1	2.2	-Q	-W
01SS1M-DB..	1	600	3+1.1	0.1	3.3	-Q	-W
03SS1M-DB..	3	600	3+1.1	0.1	3.3	-Q	-W
06SS1M-DB..	6	600	1.5+0.8	0.1	3.3	-Q	-W
10SS1M-DB..	10	600	1+0.3	0.1	3.3	-Q	-W
15SS1M-DB..	15	600	0.5+0.2	0.1	3.3	-Q	-W

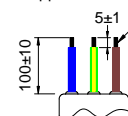
Output Terminal

(unit: mm)

- **Q:** fast-on tab based on UL310 standard



- **W:** with wired stripped and tinned



Mechanical Drawing (unit: mm) ●

- screw mount

