

Features

- General conducted attenuation performance
- Compact design, lower cost
- With IEC320 AC socket
- Current rating 1A~15A
- Practical solution for general devices

Marketing Applications

- IPC
- Claw machine
- UPS
- SMPS
- Power supply

Numbering System

1 SS1 **2** - P **3** **4** **5** - **6**

1 Rated current

01,03,06,10,15

2 Electrical schematic

Blank: standard

3 Components value (refer Filter selection table)

Blank: Cx=0.1uF, Cy=2.2nF

B: Cx=0.1uF, Cy=3.3nF

4 Grounded choke (optional)

G: Lg= 100uH

5 Bleeder resistor (optional)

R: R= 1M ohm; 1/4W min.

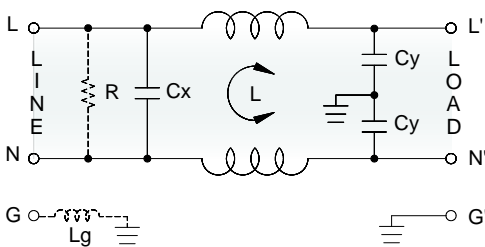
6 Output connections (refer Output terminal)

Q: fast-on tab (6.3mm)

W: with wired (100mm)

Electrical Schematic

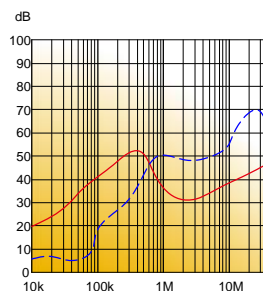
● Blank: standard



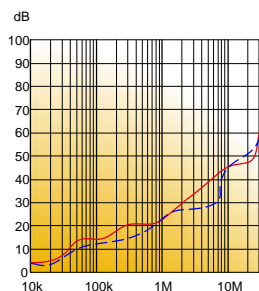
Filter Attenuation

Insertion loss (dB) in 50 ohm system CISPR 17 (for reference only)

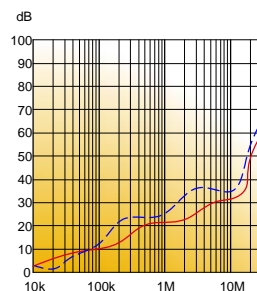
■ 1A~3A



■ 6A~10A





■ 15A



Common mode / Asymmetric (L-G) ————
 Differential mode / Symmetric (L-L) - - - -

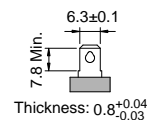
Filter Selection Table ●

Filter Part No.	Rated Current @50°C [A]	Leakage Current @250VAC/50Hz [μA]	Inductance @10KHz,0.25V [mH]	Capacitance		Output terminal	
				Cx [μF]	Cy [nF]		
Blank: standard							
01SS1-P..	1	450	6.5	0.1	2.2	-Q	-W
03SS1-P..	3	450	2.5	0.1	2.2	-Q	-W
06SS1-P..	6	450	0.8	0.1	2.2	-Q	-W
10SS1-P..	10	450	0.2	0.1	2.2	-Q	-W
15SS1-P..	15	450	0.2	0.1	2.2	-Q	-W
01SS1-PB..	1	600	3.7	0.1	3.3	-Q	-W
03SS1-PB..	3	600	1.8	0.1	3.3	-Q	-W
06SS1-PB..	6	600	0.8	0.1	3.3	-Q	-W
10SS1-PB..	10	600	0.3	0.1	3.3	-Q	-W
15SS1-PB..	15	600	0.2	0.1	3.3	-Q	-W

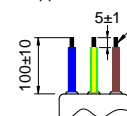
Output Terminal

(unit: mm)

- **Q:** fast-on tab based on UL310 standard



- **W:** with wired stripped and tinned



Mechanical Drawing (unit: mm) ●

- snap-in mount

