

Features

- Superior conducted attenuation performance
- Compact design, lower cost
- With IEC320 AC socket
- Current rating 1A~15A
- Practical solution for general devices

Marketing Applications

- IPC
- Measuring instruments
- Portable electrical and electronic equipment
- Audio and video processor
- Medical device (not body-coupled)

Numbering System

1 SS1 **2** - P **3** **4** **5** - **6**

1 Rated current

01,03,06,10,15

2 Electrical schematic

K: high performance

3 Components value (refer Filter selection table)

CE: Cx=0.22uF, Cy=2.2nF

CF: Cx=0.22uF, Cy=3.3nF

4 Grounded choke (optional)

G: Lg= 100uH

5 Bleeder resistor (optional)

R: R= 1M ohm; 1/4W min.

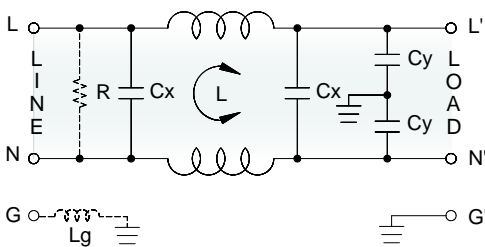
6 Output connections (refer Output terminal)

Q: fast-on tab (6.3mm)

W: with wired (100mm)

Electrical Schematic •

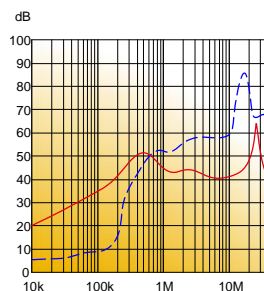
• K: high performance



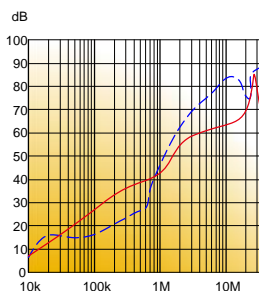
Filter Attenuation

Insertion loss (dB) in 50 ohm system CISPR 17 (for reference only)

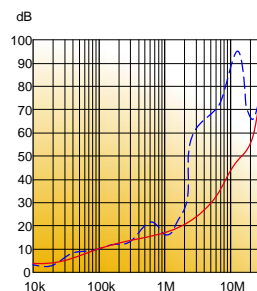
■ 1A~3A



■ 6A~10A





■ 15A



Common mode / Asymmetric (L-G) ————
 Differential mode / Symmetric (L-L) - - - - -

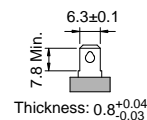
Filter Selection Table ●

Filter Part No.	Rated Current @50°C [A]	Leakage Current @250VAC/50Hz [μA]	Inductance @10KHz,0.25V [mH]	Capacitance		Output terminal	
				Cx [μF]	Cy [nF]		
K: high performance							
01SS1K-PCE..	1	450	10	0.22	2.2	-Q	-W
03SS1K-PCE..	3	450	3	0.22	2.2	-Q	-W
06SS1K-PCE..	6	450	1.2	0.22	2.2	-Q	-W
10SS1K-PCE..	10	450	1.2	0.22	2.2	-Q	-W
15SS1K-PCE..	15	450	0.7	0.22	2.2	-Q	-W
01SS1K-PCF..	1	600	10	0.22	3.3	-Q	-W
03SS1K-PCF..	3	600	3	0.22	3.3	-Q	-W
06SS1K-PCF..	6	600	1.2	0.22	3.3	-Q	-W
10SS1K-PCF..	10	600	1.2	0.22	3.3	-Q	-W
15SS1K-PCF..	15	600	0.7	0.22	3.3	-Q	-W

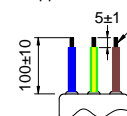
Output Terminal

(unit: mm)

- **Q:** fast-on tab based on UL310 standard



- **W:** with wired stripped and tinned



Mechanical Drawing (unit: mm) ●

- snap-in mount

