

Features

- Superior conducted attenuation performance
- Compact design, lower cost
- With IEC320 AC socket
- Current rating 20A
- Practical solution for general devices

Marketing Applications

- IPC
- Measuring instruments
- Portable electrical and electronic equipment
- Audio and video processor
- Medical device (not body-coupled)

Numbering System

1 SS1 **2** - U **3** **4** **5** - **6**

1 Rated current
20

2 Electrical schematic
K: high performance

3 Components value (refer Filter selection table)
CE: Cx=0.22uF, Cy=2.2nF
CF: Cx=0.22uF, Cy=3.3nF

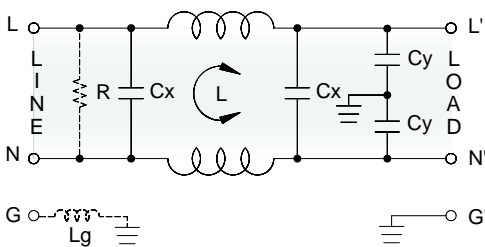
4 Grounded choke (optional)
G: Lg= 100uH

5 Bleeder resistor (optional)
R: R= 1M ohm; 1/4W min.

6 Output connections (refer Output terminal)
Q: fast-on tab (6.3mm)
W: with wired (100mm)

Electrical Schematic •

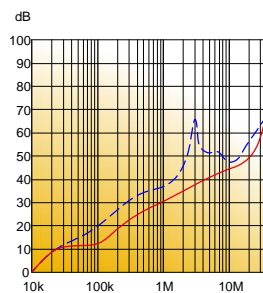
• K: high performance



Filter Attenuation

Insertion loss (dB) in 50 ohm system CISPR 17 (for reference only)

■ 20A



Common mode / Asymmetric (L-G) ————
Differential mode / Symmetric (L-L) - - - - -

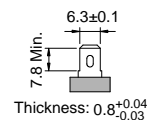
Filter Selection Table •

| Filter Part No. | Rated Current @50°C [A] | Leakage Current @250VAC/50Hz [μA] | Inductance @10KHz,0.25V [mH] | Capacitance Cx Cy [uF] [nF] | | Output terminal | |
|---------------------|-------------------------------|---|------------------------------------|-----------------------------------|-----|-----------------|----|
| K: high performance | | | | | | | |
| 20SS1K-UCE.. | 20 | 600 | 0.6 | 0.22 | 2.2 | -Q | -W |
| 20SS1K-UCF.. | 20 | 600 | 0.6 | 0.22 | 3.3 | -Q | -W |

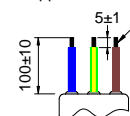
Output Terminal

(unit: mm)

- **Q**: fast-on tab based on UL310 standard

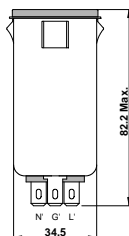
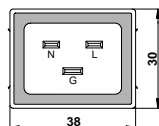


- **W**: with wired stripped and tinned



Mechanical Drawing (unit: mm) •

- snap-in mount



Suggested Panel Cutout
(Mounting from front)

