

Features

- Standard conducted attenuation performance
- With DPST rocker switch
- Snap-in mount
- Current rating 1A~10A
- With IEC320 AC socket and switch

Marketing Applications

- UPS
- Power line communications
- Network technology
- Surveillance system
- EDP system

Numbering System

1 SS3 **2** - **3** S P **4** **5** **6** - **7** (**8**)

1 Rated current

01,02,04,06,10

2 Electrical schematic

Blank: standard

3 Additional schematic (optional)

A: high performance

4 Components value (refer Filter selection table)

S: Cx=0.1uF, Cy=2.2nF
U: Cx=0.1uF, Cy=0.47nF

5 Grounded choke (optional)

G: Lg= 100uH

6 Bleeder resistor (optional)

R: R= 1M ohm; 1/4W min.

7 Output connections (refer Output terminal)

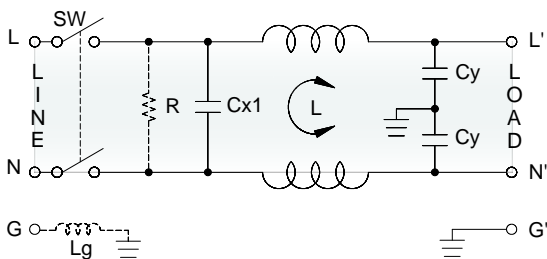
Q: fast-on tab (6.3mm)
W: with wired (100mm)

8 Type of switch

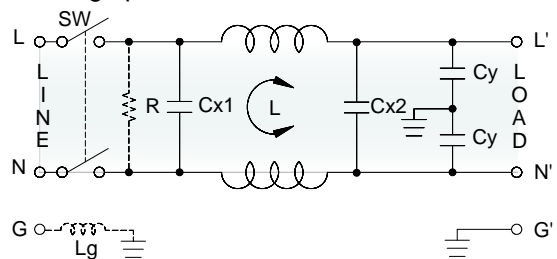
B: switch with black rocker
R: switch with illuminated red rocker
G: switch with illuminated green rocker

Electrical Schematic •

• Blank: standard

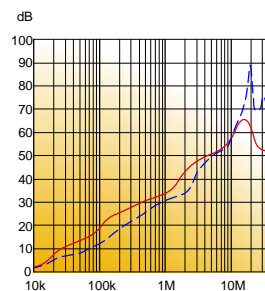


• A: high performance

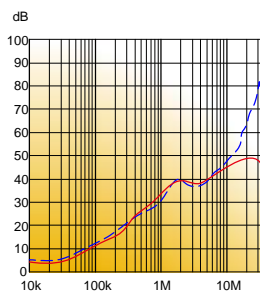


Filter Attenuation Insertion loss (dB) in 50 ohm system CISPR 17 (for reference only)

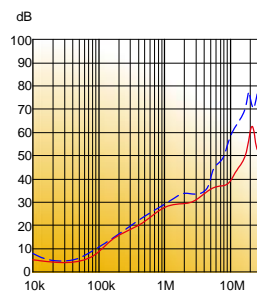
■ 1A~3A



■ 4A~6A



■ 8A~10A



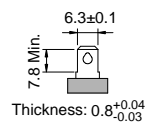
Common mode / Asymmetric (L-G) ————
Differential mode / Symmetric (L-L) - - - - -

Filter Selection Table ●

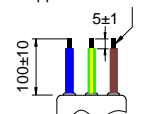
Filter Part No.	Filter PRJ No.	Rated Current @ 50°C [A]	Leakage Current @ 250VAC/50Hz [μA]	Inductance @ 10KHz, 0.25V [mH]	Capacitance		
					Cx1 [μF]	Cx2 [μF]	Cy [nF]
Blank: standard							
01SS3-SPS..-.(.)	S013SPS....D01	1	450	6.5	0.1	—	2.2
02SS3-SPS..-.(.)	S023SPS....D01	2	450	3.8	0.1	—	2.2
04SS3-SPS..-.(.)	S043SPS....D01	4	450	1.6	0.1	—	2.2
06SS3-SPS..-.(.)	S063SPS....D01	6	450	0.8	0.1	—	2.2
10SS3-SPS..-.(.)	S103SPS....D01	10	450	0.2	0.1	—	2.2
01SS3-SPU..-.(.)	S013SPU....D01	1	100	11	0.1	—	0.47
02SS3-SPU..-.(.)	S023SPU....D01	2	100	6.5	0.1	—	0.47
04SS3-SPU..-.(.)	S043SPU....D01	4	100	4.2	0.1	—	0.47
06SS3-SPU..-.(.)	S063SPU....D01	6	100	1.6	0.1	—	0.47
10SS3-SPU..-.(.)	S103SPU....D01	10	100	0.4	0.1	—	0.47
A: high performance							
01SS3-ASPS..-.(.)	S013ASPS....D01	1	450	6.5	0.1	0.1	2.2
02SS3-ASPS..-.(.)	S023ASPS....D01	2	450	3.8	0.1	0.1	2.2
04SS3-ASPS..-.(.)	S043ASPS....D01	4	450	1.6	0.1	0.1	2.2
06SS3-ASPS..-.(.)	S063ASPS....D01	6	450	0.8	0.1	0.1	2.2
10SS3-ASPS..-.(.)	S103ASPS....D01	10	450	0.2	0.1	0.1	2.2

Output Terminal (unit: mm)

- **Q:** fast-on tab based on UL310 standard



- **W:** with wired stripped and tinned



Mechanical Drawing (unit: mm)

- snap-in mount | slim

