

Features

- Standard conducted attenuation performance
- With DPST rocker switch
- Snap-in mount
- Current rating 1A~10A
- With IEC320 AC socket and switch

Marketing Applications

- UPS
- Power line communications
- Network technology
- Surveillance system
- EDP system

Numbering System

1 SS3 **2** - **3** S P **4** **5** **6** - **7** (**8**)

1 Rated current

01,02,04,06,10

2 Electrical schematic

Blank: standard

3 Additional schematic (optional)

A: high performance

4 Components value (refer Filter selection table)

S: Cx=0.1uF, Cy=2.2nF
U: Cx=0.1uF, Cy=0.47nF

5 Grounded choke (optional)

G: Lg= 100uH

6 Bleeder resistor (optional)

R: R= 1M ohm; 1/4W min.

7 Output connections (refer Output terminal)

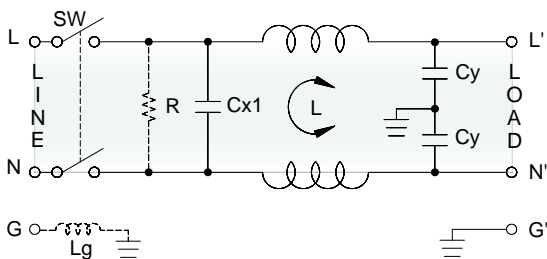
Q: fast-on tab (6.3mm)
W: with wired (100mm)

8 Type of switch

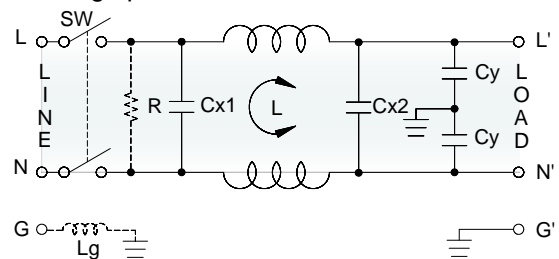
B: switch with black rocker
R: switch with illuminated red rocker
G: switch with illuminated green rocker

Electrical Schematic •

• Blank: standard

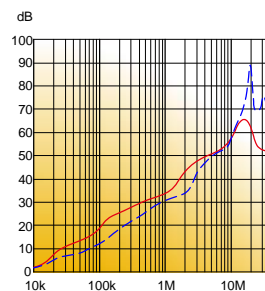


• A: high performance

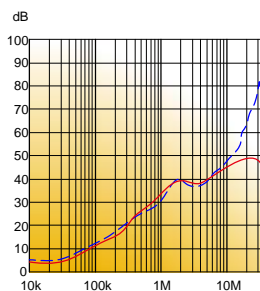


Filter Attenuation Insertion loss (dB) in 50 ohm system CISPR 17 (for reference only)

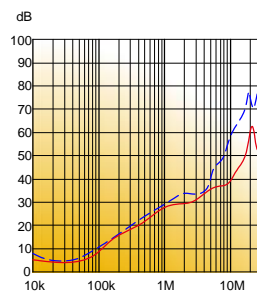
■ 1A~3A



■ 4A~6A





■ 8A~10A



Common mode / Asymmetric (L-G) ————
Differential mode / Symmetric (L-L) - - - -

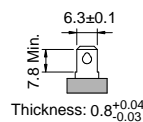
Filter Selection Table ●

Filter Part No.	Rated Current @50°C [A]	Leakage Current @250VAC/50Hz [μA]	Inductance @10KHz,0.25V [mH]	Capacitance			Output terminal	
				Cx1 [μF]	Cx2 [μF]	Cy [nF]		
Blank: standard								
01SS3-SPS..	1	450	6.5	0.1	—	2.2	-Q	-W
02SS3-SPS..	2	450	3.8	0.1	—	2.2	-Q	-W
04SS3-SPS..	4	450	1.6	0.1	—	2.2	-Q	-W
06SS3-SPS..	6	450	0.8	0.1	—	2.2	-Q	-W
10SS3-SPS..	10	450	0.2	0.1	—	2.2	-Q	-W
01SS3-SPU..	1	100	11	0.1	—	0.47	-Q	-W
02SS3-SPU..	2	100	6.5	0.1	—	0.47	-Q	-W
04SS3-SPU..	4	100	4.2	0.1	—	0.47	-Q	-W
06SS3-SPU..	6	100	1.6	0.1	—	0.47	-Q	-W
10SS3-SPU..	10	100	0.4	0.1	—	0.47	-Q	-W
A: high performance								
01SS3-ASPS..	1	450	6.5	0.1	0.1	2.2	-Q	-W
02SS3-ASPS..	2	450	3.8	0.1	0.1	2.2	-Q	-W
04SS3-ASPS..	4	450	1.6	0.1	0.1	2.2	-Q	-W
06SS3-ASPS..	6	450	0.8	0.1	0.1	2.2	-Q	-W
10SS3-ASPS..	10	450	0.2	0.1	0.1	2.2	-Q	-W

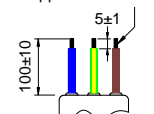
Output Terminal

(unit: mm)

- **Q:** fast-on tab based on UL310 standard

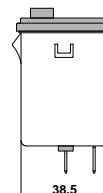
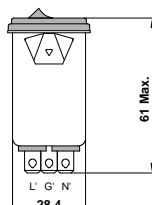
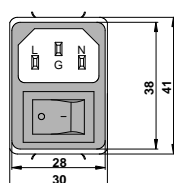


- **W:** with wired stripped and tinned



Mechanical Drawing (unit: mm)

- snap-in mount



Suggested Panel Cutout
(Mounting from front)

