

### Features

- General conducted attenuation performance
- Easy to install, compact size
- Front mounting
- Current rating 1A~10A
- With IEC320 AC socket and fuse holder

### Marketing Applications

- Controls and communication systems
- Rack mounting equipment
- Audio and video processor
- Slot machine
- Lighting equipment

### Numbering System

**1** SS3 **2** - **3** **4** **5** **6** **7** - **8** (S)

**1** Rated current

01,02,04,06,10

**2** Electrical schematic

Blank: standard

**3** Additional schematic (optional)

A: high performance

**4** Fuse holder

- 1: can be installed single fuse
- 2: can be installed dual fuses

**5** Components value (refer Filter selection table)

S: Cx=0.1uF, Cy=2.2nF  
U: Cx=0.1uF, Cy=0.47nF

**6** Grounded choke (optional)

G: Lg= 100uH

**7** Bleeder resistor (optional)

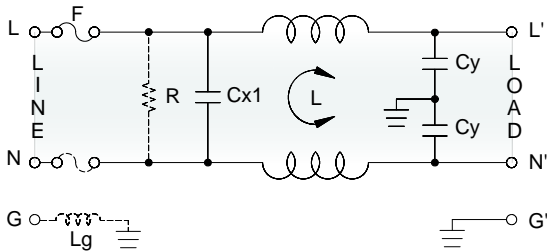
R: R= 1M ohm; 1/4W min.

**8** Output connections (refer Output terminal)

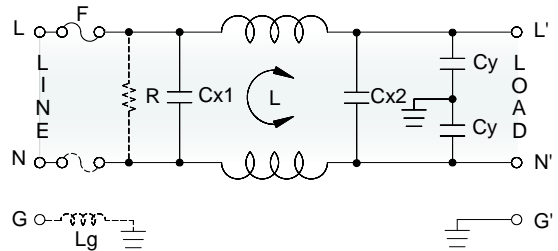
Q: fast-on tab (6.3mm)  
W: with wired (100mm)

### Electrical Schematic

Blank: standard



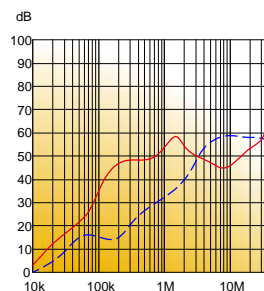
A: high performance



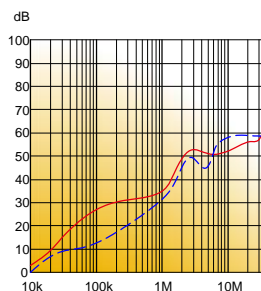
### Filter Attenuation

Insertion loss (dB) in 50 ohm system CISPR 17 (for reference only)

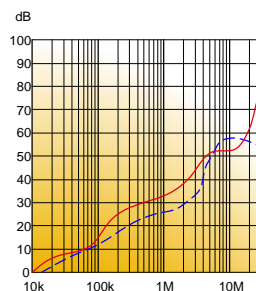
1A~3A



4A~6A





8A~10A



Common mode / Asymmetric (L-G) ————  
Differential mode / Symmetric (L-L) - - - -

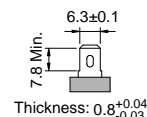
## Filter Selection Table •

Filter Part No.	Rated Current @50°C [A]	Leakage Current @250VAC/50Hz [µA]	Inductance @10KHz, 0.25V [mH]	Capacitance			Output terminal	
				Cx1 [µF]	Cx2 [µF]	Cy [nF]		
<b>Blank: standard</b>								
01SS3-S..	1	450	6.5	0.1	—	2.2	-Q	-W
02SS3-S..	2	450	3.8	0.1	—	2.2	-Q	-W
04SS3-S..	4	450	1.6	0.1	—	2.2	-Q	-W
06SS3-S..	6	450	0.8	0.1	—	2.2	-Q	-W
10SS3-S..	10	450	0.2	0.1	—	2.2	-Q	-W
01SS3-U..	1	100	11	0.1	—	0.47	-Q	-W
02SS3-U..	2	100	6.5	0.1	—	0.47	-Q	-W
04SS3-U..	4	100	4.2	0.1	—	0.47	-Q	-W
06SS3-U..	6	100	1.6	0.1	—	0.47	-Q	-W
10SS3-U..	10	100	0.4	0.1	—	0.47	-Q	-W
<b>A: high performance</b>								
01SS3-A.S..	1	450	6.5	0.1	0.1	2.2	-Q	-W
02SS3-A.S..	2	450	3.8	0.1	0.1	2.2	-Q	-W
04SS3-A.S..	4	450	1.6	0.1	0.1	2.2	-Q	-W
06SS3-A.S..	6	450	0.8	0.1	0.1	2.2	-Q	-W
10SS3-A.S..	10	450	0.2	0.1	0.1	2.2	-Q	-W

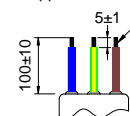
## Output Terminal

(unit: mm)

- **Q:** fast-on tab based on UL310 standard



- **W:** with wired stripped and tinned



## Mechanical Drawing (unit: mm)

- screw mount | compact

