

Features

- General conducted attenuation performance
- Easy to install, compact size
- Snap-in mount
- Current rating 1A~10A
- With IEC320 AC socket and fuse holder

Marketing Applications

- Controls and communication systems
- Rack mounting equipment
- Audio and video processor
- Slot machine
- Lighting equipment

Numbering System

1 SS3 **2** - **3** **4** P **5** **6** **7** - **8** (S)

1 Rated current

01,02,04,06,10

2 Electrical schematic

Blank: standard

3 Additional schematic (optional)

A: high performance

4 Fuse holder

- 1: can be installed single fuse
- 2: can be installed dual fuses

5 Components value (refer Filter selection table)

S: Cx=0.1uF, Cy=2.2nF
U: Cx=0.1uF, Cy=0.47nF

6 Grounded choke (optional)

G: Lg= 100uH

7 Bleeder resistor (optional)

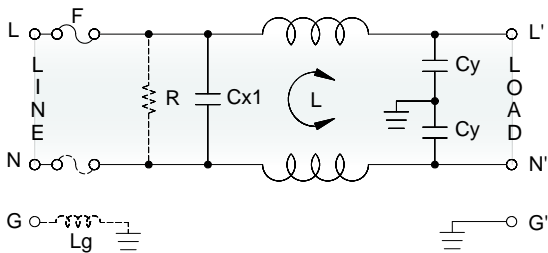
R: R= 1M ohm; 1/4W min.

8 Output connections (refer Output terminal)

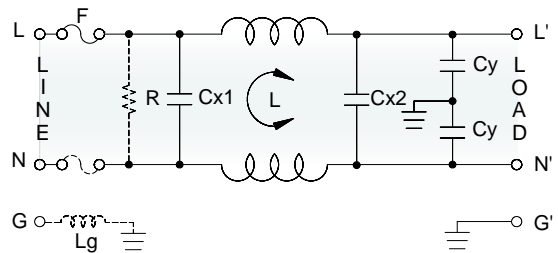
Q: fast-on tab (6.3mm)
W: with wired (100mm)

Electrical Schematic •

• Blank: standard

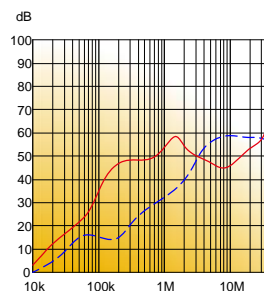


• A: high performance

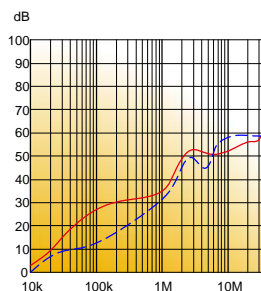


Filter Attenuation Insertion loss (dB) in 50 ohm system CISPR 17 (for reference only)

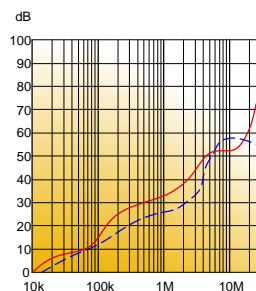
1A~3A



4A~6A





8A~10A



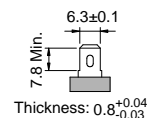
Common mode / Asymmetric (L-G) ————
Differential mode / Symmetric (L-L) - - - - -

Filter Selection Table •

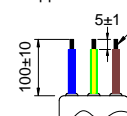
Filter Part No.	Rated Current @50°C [A]	Leakage Current @250VAC/50Hz [μA]	Inductance @10KHz,0.25V [mH]	Capacitance			Output terminal	
				Cx1 [uF]	Cx2 [uF]	Cy [nF]		
Blank: standard								
01SS3-.PS..	1	450	6.5	0.1	—	2.2	-Q	-W
02SS3-.PS..	2	450	3.8	0.1	—	2.2	-Q	-W
04SS3-.PS..	4	450	1.6	0.1	—	2.2	-Q	-W
06SS3-.PS..	6	450	0.8	0.1	—	2.2	-Q	-W
10SS3-.PS..	10	450	0.2	0.1	—	2.2	-Q	-W
01SS3-.PU..	1	100	11	0.1	—	0.47	-Q	-W
02SS3-.PU..	2	100	6.5	0.1	—	0.47	-Q	-W
04SS3-.PU..	4	100	4.2	0.1	—	0.47	-Q	-W
06SS3-.PU..	6	100	1.6	0.1	—	0.47	-Q	-W
10SS3-.PU..	10	100	0.4	0.1	—	0.47	-Q	-W
A: high performance								
01SS3-A.PS..	1	450	6.5	0.1	0.1	2.2	-Q	-W
02SS3-A.PS..	2	450	3.8	0.1	0.1	2.2	-Q	-W
04SS3-A.PS..	4	450	1.6	0.1	0.1	2.2	-Q	-W
06SS3-A.PS..	6	450	0.8	0.1	0.1	2.2	-Q	-W
10SS3-A.PS..	10	450	0.2	0.1	0.1	2.2	-Q	-W

Output Terminal (unit: mm)

- **Q:** fast-on tab based on UL310 standard

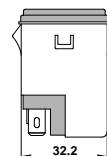
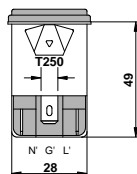
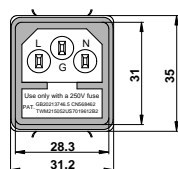


- **W:** with wired stripped and tinned



Mechanical Drawing (unit: mm)

- snap-in mount | compact



Suggested Panel Cutout (Mounting from front)

