

Features

- Ultra-high attenuation performance
- Multiple stage power line filter
- Current rating 3A~20A
- Various components value
- Ideal for industrial equipment

Marketing Applications

- POS
- Medical aesthetic equipment
- High power office equipment
- Measuring instruments
- Electronic data processing system

Numbering System

1 S4 - 2 3 4 - 5

1 Rated current
03,06,10,15,20

2 Electrical schematic
3A,3B

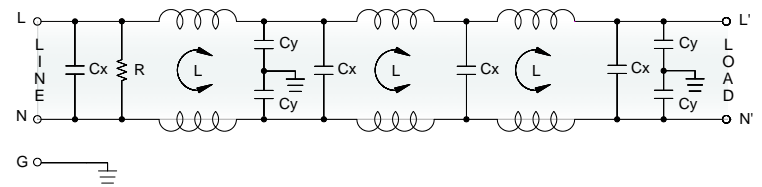
3 Components value
(refer Filter selection table)

4 Type of case
(refer Mechanical drawing)
C9

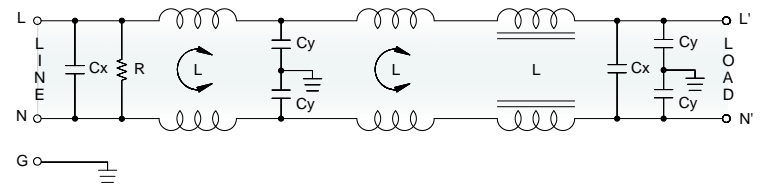
5 Output connections
(refer Output terminal)
Q: fast-on tab (6.3mm)
S: screw (M4)

Electrical Schematic

● 3A



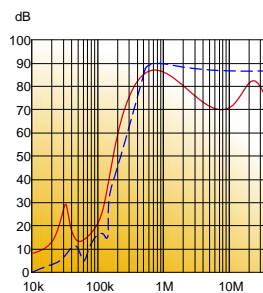
● 3B



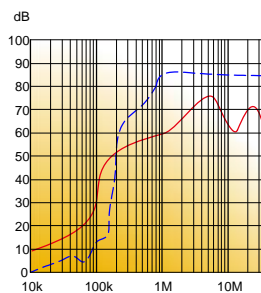
Filter Attenuation

Insertion loss (dB) in 50 ohm system CISPR 17 (for reference only)

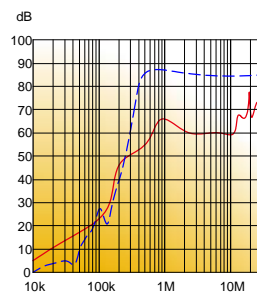
■ 3A



■ 6A~10A



■ 15A~20A



Common mode / Asymmetric (L-G) ————
Differential mode / Symmetric (L-L) - - - - -

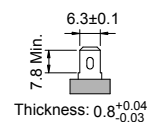
Filter Selection Table

Filter Part No.	Rated Current @50°C [A]	Leakage Current @250VAC/50Hz [μA]	Inductance @10KHz,0.25V		Capacitance		Resistor R [Ω]	Output terminal	
			Σ[mH]	Σ[uH]	Cx Σ[μF]	Cy Σ[nF]		Q	S
3A:									
03S4-3A1054729.0474C9	3	2000	27	—	4	18.8	470K	-Q	-S
06S4-3A1054727.0474C9	6	2000	21	—	4	18.8	470K	-Q	-S
10S4-3A1054725.0474C9	10	2000	15	—	4	18.8	470K	-Q	-S
15S4-3A1054723.0474C9	15	2000	9	—	4	18.8	470K	-Q	-S
20S4-3A1054722.0474C9	20	2000	6	—	6	18.8	470K	-Q	-S
3B:									
03S4-3B2254729.0334C9	3	2000	18	300	4.4	18.8	330K	-Q	-S
06S4-3B2254727.0334C9	6	2000	14	200	4.4	18.8	330K	-Q	-S
10S4-3B2254725.0334C9	10	2000	10	100	4.4	18.8	330K	-Q	-S
15S4-3B2254723.0334C9	15	2000	6	60	4.4	18.8	330K	-Q	-S
20S4-3B2254722.0334C9	20	2000	4	30	4.4	18.8	330K	-Q	-S

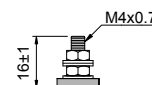
Output Terminal

(unit: mm)

- **Q:** fast-on tab based on UL310 standard

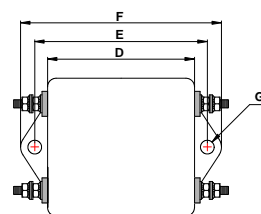
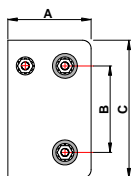


- **S:** screw based on ISO4032 standard



Mechanical Drawing (unit: mm)

- C9 type



Case	C9
A	50
B	23
C	52
D	90
E	101
F	112
G	2-Ø5x7.5