

General Purpose

Features

- Standard conducted attenuation performance
- Single stage power line filter
- Current rating 6A~30A
- Various output connections
- Practical solution for general devices

Marketing Applications

- Single-phase power supplies
- Data storage
- Broadcast installations
- Network technology
- Medical device (not body-coupled)

Numbering System

1 SS4 - **2** **3** - **4** **5** - **6**

1 Rated current

06,10,15,20,30

2 Electrical schematic

1B

3 Type of case (refer Mechanical drawing)

C2

4 Components value (refer Filter selection table)

B: Cx=0.1uF, Cy=3.3nF

Blank: Cx=0.22uF, Cy=3.3nF

5 Bleeder resistor (optional, refer Filter selection table)

R

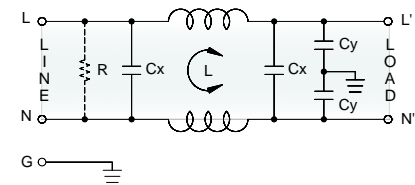
6 Output connections (refer Output terminal)

Q: fast-on tab (6.3mm)

S: screw (M4)

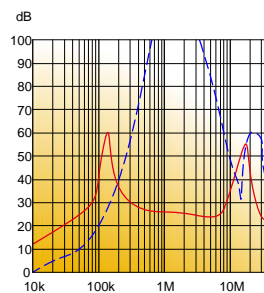
Electrical Schematic •

• 1B

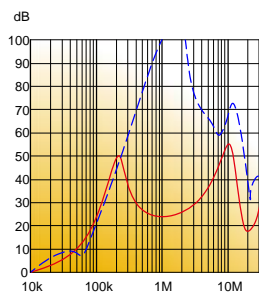


Filter Attenuation Insertion loss (dB) in 50 ohm system CISPR 17 (for reference only)

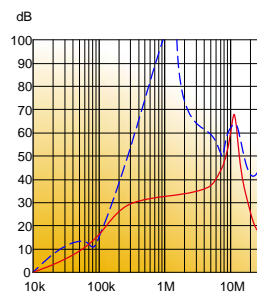
■ 6A~10A



■ 15A~20A






■ 30A



Common mode / Asymmetric (L-G) ————
 Differential mode / Symmetric (L-L) - - - - -

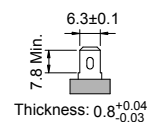
Filter Selection Table ●

Filter Part No.	Rated Current @50°C [A]	Leakage Current @250VAC/50Hz [μA]	Inductance @10KHz, 0.25V [mH]	Capacitance		Resistor R [Ω]	Output terminal		
				Cx [μF]	Cy [nF]				
1B:									
06SS4-1BC2-B.	6	600	5	0.1	3.3	2.2M	-Q	-S	-
10SS4-1BC2-B.	10	600	3	0.1	3.3	2.2M	-Q	-S	-
15SS4-1BC2-B.	15	600	2	0.1	3.3	2.2M	-Q	-S	-
20SS4-1BC2-B.	20	600	0.9	0.1	3.3	2.2M	-Q	-S	-
30SS4-1BC2-B.	30	600	0.5	0.1	3.3	2.2M	-Q	-S	-
06SS4-1BC2-.	6	600	5	0.22	3.3	2.2M	-Q	-S	-
10SS4-1BC2-.	10	600	3	0.22	3.3	2.2M	-Q	-S	-
15SS4-1BC2-.	15	600	2	0.22	3.3	2.2M	-Q	-S	-
20SS4-1BC2-.	20	600	0.9	0.22	3.3	2.2M	-Q	-S	-
30SS4-1BC2-.	30	600	0.5	0.22	3.3	2.2M	-Q	-S	-

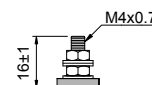
Output Terminal

(unit: mm)

- **Q:** fast-on tab based on UL310 standard

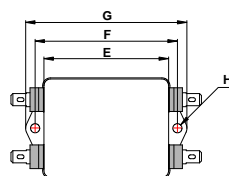
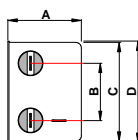


- **S:** screw based on ISO4032 standard



Mechanical Drawing (unit: mm) ●

- C type



Case	C2
A	39.5
B	30
C	52.5
D	54
E	65.5
F	74.7
G	84.8
H	2-Ø4.8