

Features

- 3 in 1 compact power entry modules with filtered
- Easy to install
- Minified design with narrow body
- Current rating 1A~10A
- With IEC950 appliance inlet and fuse holder and switch

Marketing Applications

- SMPS
- Audio & Video equipment
- Automatic data processing system
- Portable electrical and electronic equipment
- Medical device (not body-coupled)

Numbering System

1 SS6 - **2** **3** **4** **5** - **6** **B** **7**

1 Rated current

01,02,04,06,10

2 Type of module

B1: socket + switch + single fuse holder
B2: socket + switch + double fuse holders

3 Electrical schematic

A: general purpose

4 Components value (refer Filter selection table)

H: Cx=0.22uF, Cy=2.2nF
I: Cx=0.22uF, Cy=3.3nF

5 Bleeder resistor (optional)

R: R= 1M ohm; 1/4W min.

6 Output connections (refer Output terminal)

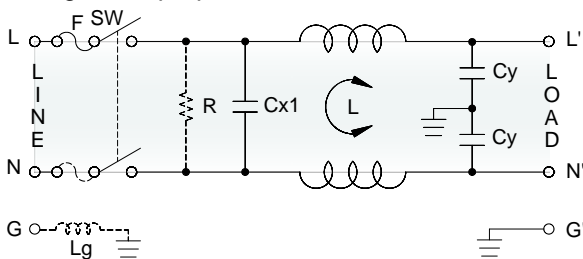
Q: fast-on tab (6.3mm)

7 Type of switch

B: switch with black rocker
R: switch with illuminated red rocker
G: switch with illuminated green rocker

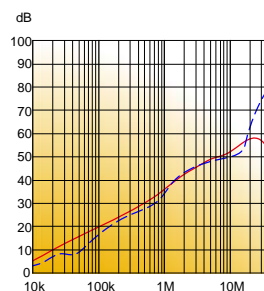
Electrical Schematic •

- A**: general purpose

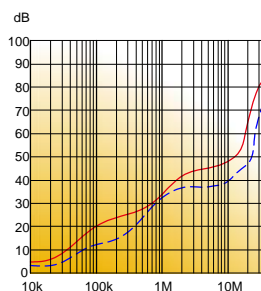


Filter Attenuation Insertion loss (dB) in 50 ohm system CISPR 17 (for reference only)

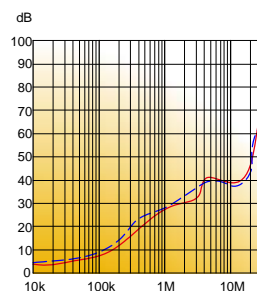
1A~3A



4A~6A



8A~10A



Common mode / Asymmetric (L-G) ————
 Differential mode / Symmetric (L-L) - - - - -

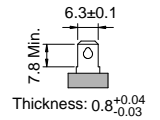
Filter Selection Table •

Filter Part No.	Filter PRJ No.	Rated Current @50°C [A]	Leakage Current @250VAC/50Hz [μA]	Inductance @10KHz, 0.25V [mH]	Capacitance		
					Cx1 [uF]	Cx2 [uF]	Cy [nF]
A: general purpose							
01SS6-.AH.-QB.	S016.AH.QB.D01	1	450	7.5	0.22	—	2.2
02SS6-.AH.-QB.	S026.AH.QB.D01	2	450	5.5	0.22	—	2.2
04SS6-.AH.-QB.	S046.AH.QB.D01	4	450	2	0.22	—	2.2
06SS6-.AH.-QB.	S066.AH.QB.D01	6	450	0.8	0.22	—	2.2
10SS6-.AH.-QB.	S106.AH.QB.D01	10	450	0.4	0.22	—	2.2
01SS6-.AI.-QB.	S016.AI.QB.D01	1	600	10	0.22	—	3.3
02SS6-.AI.-QB.	S026.AI.QB.D01	2	600	6.5	0.22	—	3.3
04SS6-.AI.-QB.	S046.AI.QB.D01	4	600	2.7	0.22	—	3.3
06SS6-.AI.-QB.	S066.AI.QB.D01	6	600	1.05	0.22	—	3.3
10SS6-.AI.-QB.	S106.AI.QB.D01	10	600	0.4	0.22	—	3.3

Output Terminal

(unit: mm)

- Q: fast-on tab based on UL310 standard



Mechanical Drawing (unit: mm) •

- screw mount | horizontal | miniature

