

Features

- 3 in 1 compact power entry modules with filtered
- Compact size
- Superior attenuation performance
- Current rating 1A~10A
- Versatile model

Marketing Applications

- Safety tester
- Automated optical inspection (AOI)
- Gaming machine
- Darts machine
- Server

Numbering System

1 SS6 - **2** **3** **4** **5** - **6** P **7**

1 Rated current

01,02,04,06,10

2 Type of module

B1: socket + switch + single fuse holder
B2: socket + switch + double fuse holders

3 Electrical schematic

A: general purpose

4 Components value (refer Filter selection table)

H: Cx=0.22uF, Cy=2.2nF
I: Cx=0.22uF, Cy=3.3nF

5 Bleeder resistor (optional)

R: R= 1M ohm; 1/4W min.

6 Output connections (refer Output terminal)

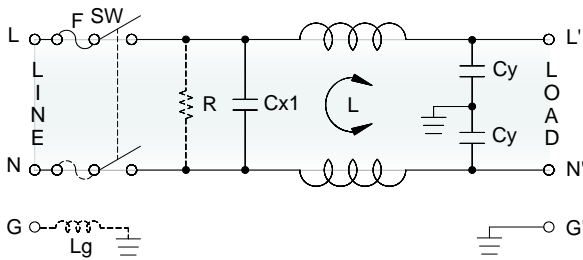
Q: fast-on tab (6.3mm)

7 Type of switch

B: switch with black rocker
R: switch with illuminated red rocker
G: switch with illuminated green rocker

Electrical Schematic

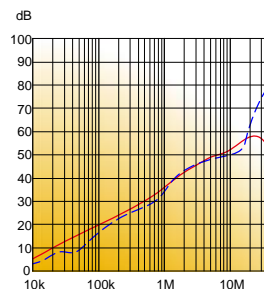
- A: general purpose



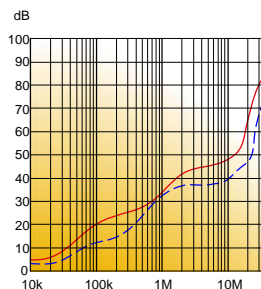
Filter Attenuation

Insertion loss (dB) in 50 ohm system CISPR 17 (for reference only)

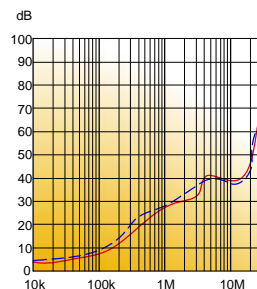
1A~3A



4A~6A



8A~10A



Common mode / Asymmetric (L-G) ————
Differential mode / Symmetric (L-L) - - - - -

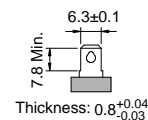
Filter Selection Table ●

Filter Part No.	Filter PRJ No.	Rated Current @50°C [A]	Leakage Current @250VAC/50Hz [μA]	Inductance @10KHz, 0.25V [mH]	Capacitance		
					Cx1 [uF]	Cx2 [uF]	Cy [nF]
A: general purpose							
01SS6-.AH.-QP.	S016.AH.QP.D02	1	450	7.5	0.22	—	2.2
02SS6-.AH.-QP.	S026.AH.QP.D02	2	450	5.5	0.22	—	2.2
04SS6-.AH.-QP.	S046.AH.QP.D02	4	450	2	0.22	—	2.2
06SS6-.AH.-QP.	S066.AH.QP.D02	6	450	0.8	0.22	—	2.2
10SS6-.AH.-QP.	S106.AH.QP.D02	10	450	0.4	0.22	—	2.2
01SS6-.AI.-QP.	S016.AI.QP.D02	1	600	10	0.22	—	3.3
02SS6-.AI.-QP.	S026.AI.QP.D02	2	600	6.5	0.22	—	3.3
04SS6-.AI.-QP.	S046.AI.QP.D02	4	600	2.7	0.22	—	3.3
06SS6-.AI.-QP.	S066.AI.QP.D02	6	600	1.05	0.22	—	3.3
10SS6-.AI.-QP.	S106.AI.QP.D02	10	600	0.4	0.22	—	3.3

Output Terminal

(unit: mm)

- Q: fast-on tab based on UL310 standard



Mechanical Drawing (unit: mm)

- snap-in mount | compact

