

Features

- Ultra-high conducted attenuation performance
- Compact design, lower cost
- With IEC320 AC socket
- Current rating 1A~15A
- Practical solution for medical devices

Marketing Applications

- Conferencing system
- Light sensor system
- Auxiliary power supply
- Endoscopy light source
- Label printer

Numbering System

1 SS1 **2** - **3** **4** **5** - **6** (T)

1 Rated current

01,03,06,10,15

2 Electrical schematic

N: medical compliance

3 Components value (refer Filter selection table)

DA: $C_x=0.1\mu F$

4 Grounded choke (optional)

G: $L_g=100\mu H$

5 Bleeder resistor (optional)

R: $R=1M\ \text{ohm}; 1/4W\ \text{min.}$

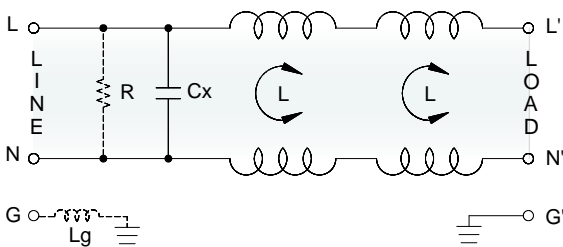
6 Output connections (refer Output terminal)

Q: fast-on tab (6.3mm)

W: with wired (100mm)

Electrical Schematic

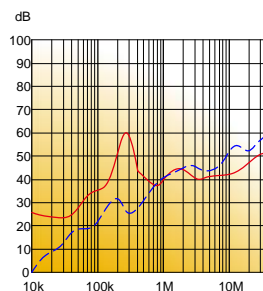
● N: medical compliance



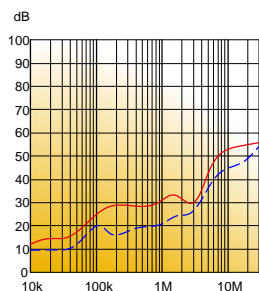
Filter Attenuation

Insertion loss (dB) in 50 ohm system CISPR 17 (for reference only)

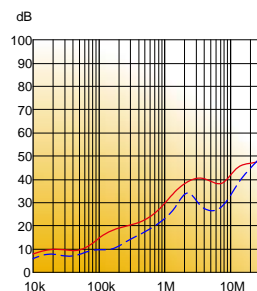
■ 1A~3A



■ 6A~10A





■ 15A



Common mode / Asymmetric (L-G) ————
 Differential mode / Symmetric (L-L) - - - -

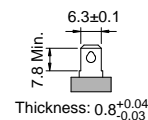
Filter Selection Table ●

Filter Part No.	Rated Current @50°C [A]	Leakage Current @250VAC/50Hz [μA]	Inductance @10KHz,0.25V [mH]	Capacitance		Output terminal	
				Cx [μF]	Cy [nF]		
N: medical appliance							
01SS1N-DA..	1	5	3+1.1	0.1	—	-Q	-W
03SS1N-DA..	3	5	3+1.1	0.1	—	-Q	-W
06SS1N-DA..	6	5	1.5+0.8	0.1	—	-Q	-W
10SS1N-DA..	10	5	1+0.3	0.1	—	-Q	-W
15SS1N-DA..	15	5	0.5+0.2	0.1	—	-Q	-W

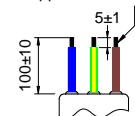
Output Terminal

(unit: mm)

- **Q:** fast-on tab based on UL310 standard



- **W:** with wired stripped and tinned



Mechanical Drawing (unit: mm) ●

- screw mount

