

### Features

- General conducted attenuation performance
- Compact design, lower cost
- With IEC320 AC socket
- Current rating 1A~15A
- Practical solution for medical devices

### Marketing Applications

- Medical power supply
- Remote health monitoring system
- UPS
- Anaesthesia machine
- Treatment ventilator

### Numbering System

**1 SS1 2 - 3 4 5 - 6 ( S )**

**1** Rated current

01,03,06,10,15

**2** Electrical schematic

A: medical compliance

**3** Components value (refer Filter selection table)

Blank: Cx=0.1uF

**4** Grounded choke (optional)

G: Lg= 100uH

**5** Bleeder resistor (optional)

R: R= 1M ohm; 1/4W min.

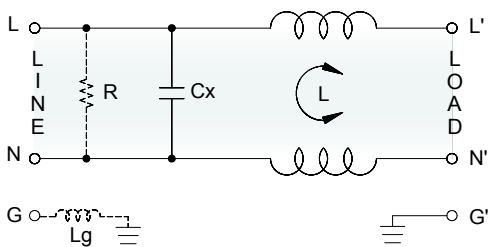
**6** Output connections (refer Output terminal)

Q: fast-on tab (6.3mm)

W: with wired (100mm)

### Electrical Schematic •

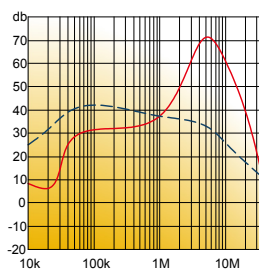
- A: medical compliance



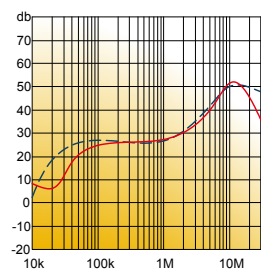
### Filter Attenuation

Insertion loss (dB) in 50 ohm system CISPR 17 (for reference only)

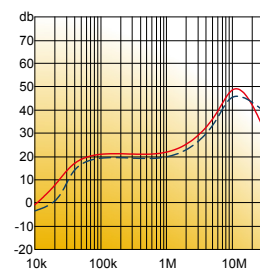
■ 1A~3A



■ 6A~10A



■ 15A



Common mode / Asymmetric (L-G) ————  
 Differential mode / Symmetric (L-L) - - - - -

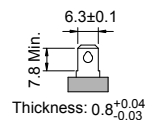
## Filter Selection Table ●

Filter Part No.	Rated Current @50°C [A]	Leakage Current @250VAC/50Hz [μA]	Inductance @10KHz,0.25V [mH]	Capacitance		Output terminal	
				Cx [μF]	Cy [nF]		
A: medical compliance							
01SS1A-..	1	5	6.5	0.1	-	-Q	-W
03SS1A-..	3	5	2.5	0.1	-	-Q	-W
06SS1A-..	6	5	0.8	0.1	-	-Q	-W
10SS1A-..	10	5	0.2	0.1	-	-Q	-W
15SS1A-..	15	5	0.2	0.1	-	-Q	-W

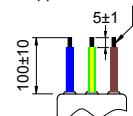
## Output Terminal

(unit: mm)

- **Q:** fast-on tab based on UL310 standard



- **W:** with wired stripped and tinned



## Mechanical Drawing (unit: mm) ●

- screw mount

