

Features

- Superior conducted attenuation performance
- Compact design, lower cost
- With IEC320 AC socket
- Current rating 1A~15A
- Practical solution for medical devices

Marketing Applications

- Medical power supply
- Measuring instruments
- Remote health monitoring system
- UPS
- Medical device (not body-coupled)

Numbering System

1 SS1 **2** - **3** **4** **5** - **6** (T)

1 Rated current

01,03,06,10,15

2 Electrical schematic

L: medical compliance

3 Components value (refer Filter selection table)

CE: $C_x=0.22\mu F$

4 Grounded choke (optional)

G: $L_g=100\mu H$

5 Bleeder resistor (optional)

R: $R=1M\ \text{ohm}; 1/4W\ \text{min.}$

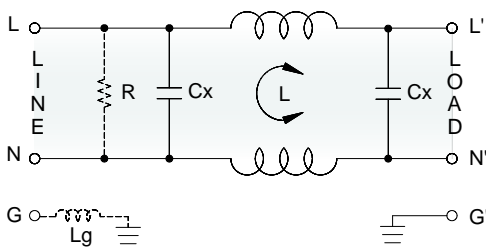
6 Output connections (refer Output terminal)

Q: fast-on tab (6.3mm)

W: with wired (100mm)

Electrical Schematic

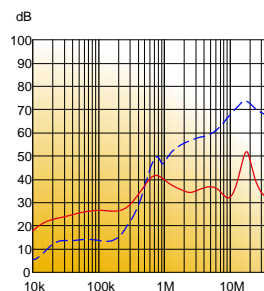
● L: medical compliance



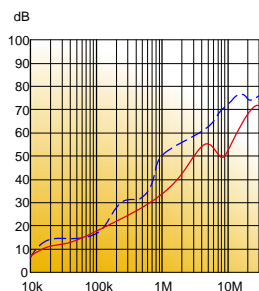
Filter Attenuation

Insertion loss (dB) in 50 ohm system CISPR 17 (for reference only)

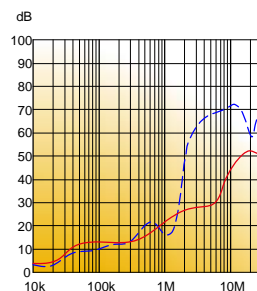
■ 1A~3A



■ 6A~10A





■ 15A



Common mode / Asymmetric (L-G) ————
 Differential mode / Symmetric (L-L) - - - - -

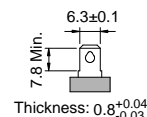
Filter Selection Table •

Filter Part No.	Rated Current @50°C [A]	Leakage Current @250VAC/50Hz [μA]	Inductance @10KHz,0.25V [mH]	Capacitance		Output terminal	
				Cx [μF]	Cy [nF]		
L: medical compliance							
01SS1L-CE..	1	5	6.5	0.22	—	-Q	-W
03SS1L-CE..	3	5	2.5	0.22	—	-Q	-W
06SS1L-CE..	6	5	0.8	0.22	—	-Q	-W
10SS1L-CE..	10	5	0.2	0.22	—	-Q	-W
15SS1L-CE..	15	5	0.2	0.22	—	-Q	-W

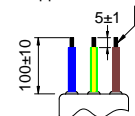
Output Terminal

(unit: mm)

- **Q:** fast-on tab based on UL310 standard



- **W:** with wired stripped and tinned



Mechanical Drawing (unit: mm) •

- screw mount

