

### Features

- Ultra-high conducted attenuation performance
- Compact design, lower cost
- With IEC320 AC socket
- Current rating 20A
- Practical solution for medical devices

### Marketing Applications

- Measuring instruments
- Endoscopy light source
- Medical scale
- Medical device (not body-coupled)
- Portable electrical equipment

### Numbering System

**1** SS1 **2** - F **3** **4** **5** - **6**

**1** Rated current

20

**2** Electrical schematic

N: medical compliance

**3** Components value (refer Filter selection table)

DA:  $C_x = 0.1\mu F$

**4** Grounded choke (optional)

G:  $L_g = 100\mu H$

**5** Bleeder resistor (optional)

R:  $R = 1M\ \Omega$ ;  $1/4W$  min.

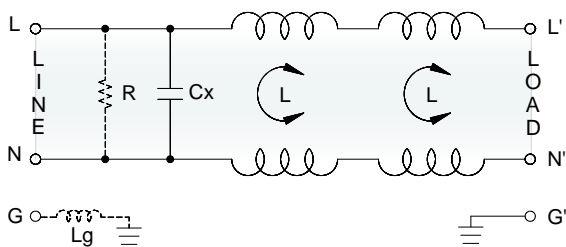
**6** Output connections (refer Output terminal)

Q: fast-on tab (6.3mm)

W: with wired (100mm)

### Electrical Schematic •

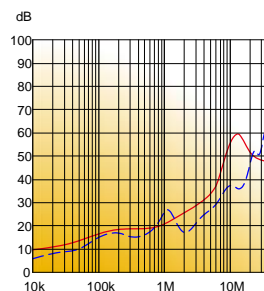
• N: medical compliance



### Filter Attenuation

Insertion loss (dB) in 50 ohm system CISPR 17 (for reference only)

■ 20A



Common mode / Asymmetric (L-G) ————  
Differential mode / Symmetric (L-L) - - - - -

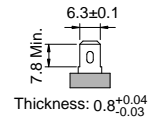
## Filter Selection Table •

Filter Part No.	Rated Current @50°C [A]	Leakage Current @250VAC/50Hz [μA]	Inductance @10KHz, 0.25V [mH]	Capacitance Cx [μF]	Cy [nF]	Output terminal
N: medical compliance						
20SS1N-FDA..	20	5	0.3+0.1	0.1	—	-Q -W

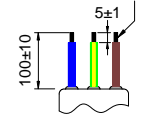
## Output Terminal

(unit: mm)

- **Q:** fast-on tab based on UL310 standard



- **W:** with wired stripped and tinned



## Mechanical Drawing (unit: mm) •

- screw mount

