

Features

- Ultra-high conducted attenuation performance
- Compact design, lower cost
- With IEC320 AC socket
- Current rating 20A
- Practical solution for medical devices

Marketing Applications

- Measuring instruments
- Endoscopy light source
- Medical scale
- Medical device (not body-coupled)
- Portable electrical equipment

Numbering System

1 SS1 **2** - U **3** **4** **5** - **6**

1 Rated current

20

2 Electrical schematic

N: medical compliance

3 Components value (refer Filter selection table)

DA: $C_x=0.1\mu F$

4 Grounded choke (optional)

G: $L_g=100\mu H$

5 Bleeder resistor (optional)

R: $R=1M\ \text{ohm}; 1/4W\ \text{min.}$

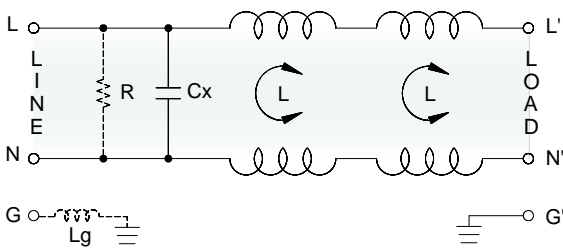
6 Output connections (refer Output terminal)

Q: fast-on tab (6.3mm)

W: with wired (100mm)

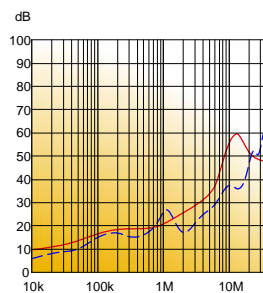
Electrical Schematic •

• N: medical compliance



Filter Attenuation Insertion loss (dB) in 50 ohm system CISPR 17 (for reference only)

■ 20A



Common mode / Asymmetric (L-G) ————

Differential mode / Symmetric (L-L) - - - - -

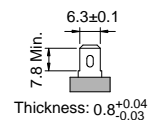
Filter Selection Table •

Filter Part No.	Rated Current @50°C [A]	Leakage Current @250VAC/50Hz [μA]	Inductance @10KHz,0.25V [mH]	Capacitance Cx Cy [uF] [nF]		Output terminal	
N: medical compliance							
20SS1N-UDA..	20	5	0.3+0.1	0.1	—	-Q	-W

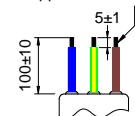
Output Terminal

(unit: mm)

- **Q**: fast-on tab based on UL310 standard

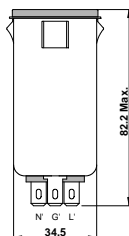
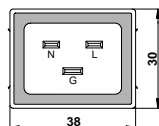


- **W**: with wired stripped and tinned



Mechanical Drawing (unit: mm) •

- snap-in mount



Suggested Panel Cutout
(Mounting from front)

