

Features

- Compact design with waterproof kit included
- Superior conducted attenuation performance
- Screw mount
- Current rating 1A~10A
- IP65 acc. to IEC 60529 against liquids or mist

Marketing Applications

- Medical device (not body-coupled)
- Surveillance system
- EDP system
- Measuring instruments
- Infusion pump

Numbering System

1 SS3 **2** - **3** **4** **5** **6** **7** - **8**

1 Rated current

01,02,04,06,10

2 Electrical schematic

A: medical compliance

3 Additional schematic (optional)

A: high performance

4 Fuse holder

- 1: can be installed single fuse
- 2: can be installed dual fuses

5

Components value (refer Filter selection table)

S: Cx=0.1uF

6

Grounded choke (optional)

G: Lg= 100uH

7

Bleeder resistor (optional)

R: R= 1M ohm; 1/4W min.

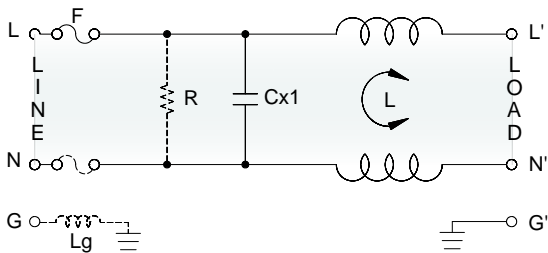
8

Output connections (refer Output terminal)

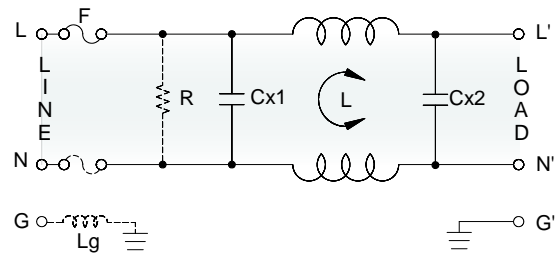
Q: fast-on tab (6.3mm)

Electrical Schematic •

• A: medical compliance

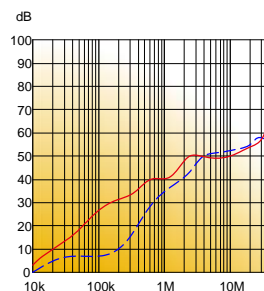


• A: high performance

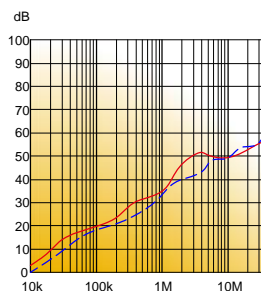


Filter Attenuation Insertion loss (dB) in 50 ohm system CISPR 17 (for reference only)

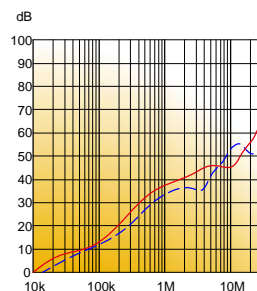
■ 1A~3A



■ 4A~6A



■ 8A~10A



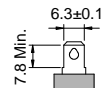
Common mode / Asymmetric (L-G) ————
 Differential mode / Symmetric (L-L) - - - -

Filter Selection Table •

Filter Part No.	Rated Current @50°C [A]	Leakage Current @250VAC/50Hz [µA]	Inductance @10KHz,0.25V [mH]	Capacitance			Output terminal	
				Cx1 [µF]	Cx2 [µF]	Cy [nF]		
A: medical compliance								
01SS3A-.S..	1	5	6.5	0.1	—	—	-Q	-W
02SS3A-.S..	2	5	3.8	0.1	—	—	-Q	-W
04SS3A-.S..	4	5	1.6	0.1	—	—	-Q	-W
06SS3A-.S..	6	5	0.8	0.1	—	—	-Q	-W
10SS3A-.S..	10	5	0.2	0.1	—	—	-Q	-W
A: high performance								
01SS3A-A.S..	1	5	6.5	0.1	0.1	—	-Q	-W
02SS3A-A.S..	2	5	3.8	0.1	0.1	—	-Q	-W
04SS3A-A.S..	4	5	1.6	0.1	0.1	—	-Q	-W
06SS3A-A.S..	6	5	0.8	0.1	0.1	—	-Q	-W
10SS3A-A.S..	10	5	0.2	0.1	0.1	—	-Q	-W

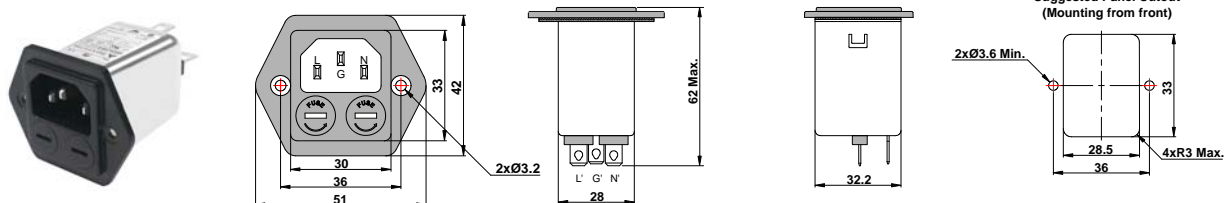
Output Terminal (unit: mm)

- Q: fast-on tab based on UL310 standard



Mechanical Drawing (unit: mm)

- screw mount | waterproof IP65



Installation instructions for waterproof kit

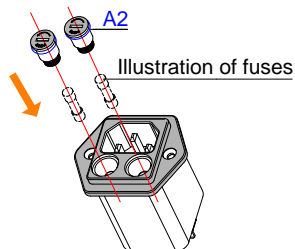
- **Waterproof kit** (Item code: Part x Q'ty)

A1: Silicon rubber sealing for filter.....x1
 A2: Silicon rubber sealing for fuse holder.....x6
 A3: Silicon rubber sealing for M3 screw.....x6

A4: M3 screw.....x2
 A5: M3 nut.....x2
 A6: M3 washer.....x2

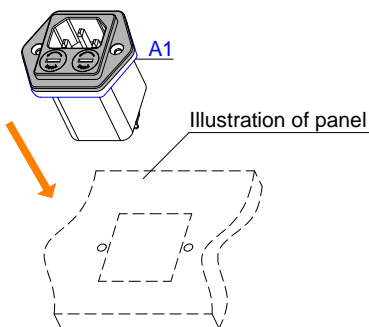
Step 1

Put A2 on the cover of fuse holder first. Install fuse(s) and put fuse holder back.



Step 2

Put A1 on the filter, then install the filter on panel.



Step 3

Put A3 on A4 first, then install the A4. Install A6 and A5 on A4 from the rear of panel.

