

### Features

- Standard conducted attenuation performance
- With DPST rocker switch
- Snap-in mount
- Current rating 1A~10A
- With IEC320 AC socket and switch

### Marketing Applications

- Controls and communication systems
- Surveillance system
- Medical power supply
- Diagnostic imaging device
- Clinical chemistry analyzer

### Numbering System

**1** SS3 **2** - **3** S P **4** **5** **6** - **7** (**8**)

**1** Rated current

01,02,04,06,10

**2** Electrical schematic

A: medical compliance

**3** Additional schematic (optional)

A: high performance

**4** Components value (refer Filter selection table)

S: Cx=0.1uF

**5** Grounded choke (optional)

G: Lg= 100uH

**6** Bleeder resistor (optional)

R: R= 1M ohm; 1/4W min.

**7** Output connections (refer Output terminal)

Q: fast-on tab (6.3mm)

W: with wired (100mm)

**8** Type of switch

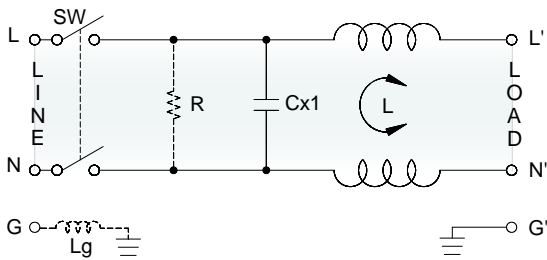
B: switch with black rocker

R: switch with illuminated red rocker

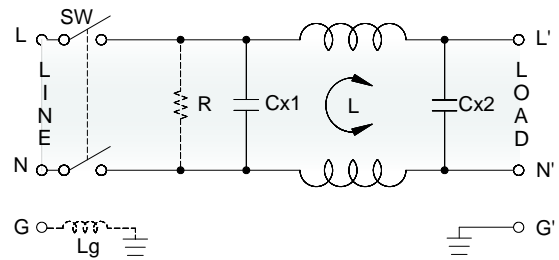
G: switch with illuminated green rocker

### Electrical Schematic •

• A: medical compliance

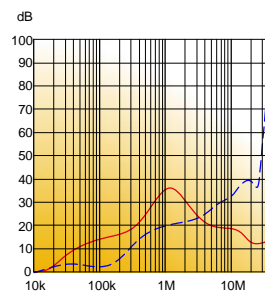


• A: high performance

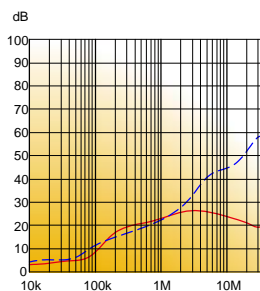


### Filter Attenuation Insertion loss (dB) in 50 ohm system CISPR 17 (for reference only)

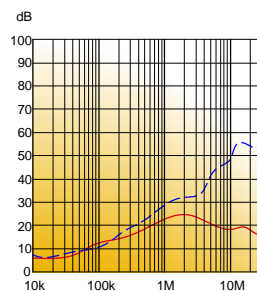
■ 1A~3A



■ 4A~6A





■ 8A~10A



Common mode / Asymmetric (L-G) ———  
 Differential mode / Symmetric (L-L) - - - - -

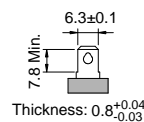
## Filter Selection Table ●

Filter Part No.	Rated Current @50°C [A]	Leakage Current @250VAC/50Hz [μA]	Inductance @10KHz,0.25V [mH]	Capacitance			Output terminal	
				Cx1 [μF]	Cx2 [μF]	Cy [nF]		
<b>A: medical compliance</b>								
01SS3A-SPS..	1	5	6.5	0.1	—	—	-Q	-W
02SS3A-SPS..	2	5	3.8	0.1	—	—	-Q	-W
04SS3A-SPS..	4	5	1.6	0.1	—	—	-Q	-W
06SS3A-SPS..	6	5	0.8	0.1	—	—	-Q	-W
10SS3A-SPS..	10	5	0.2	0.1	—	—	-Q	-W
<b>A: high performance</b>								
01SS3A-ASPS..	1	5	6.5	0.1	0.1	—	-Q	-W
02SS3A-ASPS..	2	5	3.8	0.1	0.1	—	-Q	-W
04SS3A-ASPS..	4	5	1.6	0.1	0.1	—	-Q	-W
06SS3A-ASPS..	6	5	0.8	0.1	0.1	—	-Q	-W
10SS3A-ASPS..	10	5	0.2	0.1	0.1	—	-Q	-W

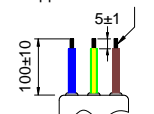
## Output Terminal

(unit: mm)

- **Q:** fast-on tab based on UL310 standard

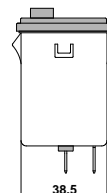
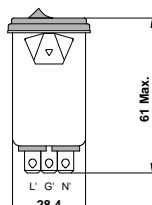
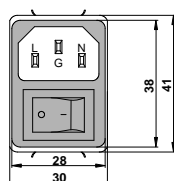


- **W:** with wired stripped and tinned



## Mechanical Drawing (unit: mm)

- snap-in mount



Suggested Panel Cutout  
(Mounting from front)

