

Features

- 3 in 1 compact power entry modules with filtered
- Easy to install
- Minified design with narrow body
- Current rating 1A~10A
- With IEC950 appliance inlet and fuse holder and switch

Marketing Applications

- Safety tester
- Automated optical inspection (AOI)
- SMPS
- Medical device (not body-coupled)
- Portable electrical and electronic equipment

Numbering System

1 SS6 **A** - **2** **3** **4** **5** - **6** **B** **7**

1 Rated current

01,02,04,06,10

2 Type of module

B1: socket + switch + single fuse holder
B2: socket + switch + double fuse holders

3 Electrical schematic

A: general purpose

4 Components value (refer Filter selection table)

H: $C_x=0.22\mu F$

5 Bleeder resistor (optional)

R: $R=1M\ \text{ohm}; 1/4W\ \text{min.}$

6 Output connections (refer Output terminal)

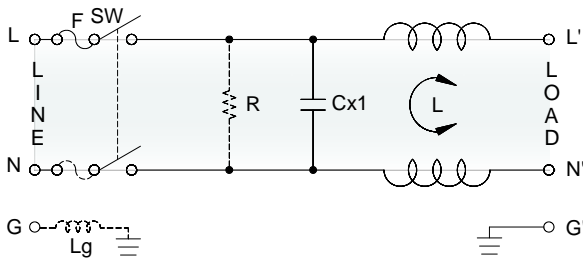
Q: fast-on tab (6.3mm)

7 Type of switch

B: switch with black rocker
R: switch with illuminated red rocker
G: switch with illuminated green rocker

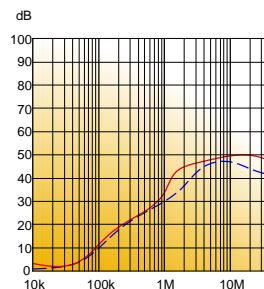
Electrical Schematic •

- A**: general purpose

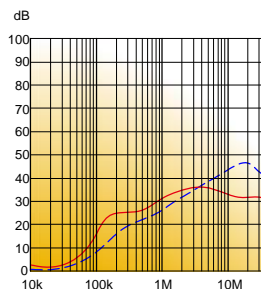


Filter Attenuation Insertion loss (dB) in 50 ohm system CISPR 17 (for reference only)

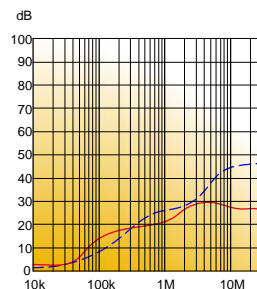
1A~3A



4A~6A



8A~10A



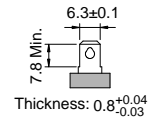
Common mode / Asymmetric (L-G) ————
 Differential mode / Symmetric (L-L) - - - - -

Filter Selection Table •

Filter Part No.	Filter PRJ No.	Rated Current @50°C [A]	Leakage Current @250VAC/50Hz [μA]	Inductance @10KHz, 0.25V [mH]	Capacitance		
					Cx1 [uF]	Cx2 [uF]	Cy [nF]
A: general purpose							
01SS6A-.AH.-QB.	S016A.AH.QB.D01	1	5	7.5	0.22	—	—
02SS6A-.AH.-QB.	S026A.AH.QB.D01	2	5	5.5	0.22	—	—
04SS6A-.AH.-QB.	S046A.AH.QB.D01	4	5	2	0.22	—	—
06SS6A-.AH.-QB.	S066A.AH.QB.D01	6	5	0.8	0.22	—	—
10SS6A-.AH.-QB.	S106A.AH.QB.D01	10	5	0.4	0.22	—	—

Output Terminal (unit: mm)

- Q: fast-on tab based on UL310 standard



Mechanical Drawing (unit: mm) •

- screw mount | horizontal | miniature

