

Features

- 3 in 1 compact power entry modules with filtered
- IEC950 appliance inlet
- Snap-in mount
- Current rating 1A~10A
- With IEC950 appliance inlet and fuse holder and switch

Marketing Applications

- Safety tester
- Automated optical inspection (AOI)
- SMPS
- Medical device (not body-coupled)
- Portable electrical and electronic equipment

Numbering System

1 SS6 **A** - **2** **3** **4** **5** **6** - **7** **P** **8**

1 Rated current

01,02,04,06,10

2 Type of module

B1: socket + switch + single fuse holder
B2: socket + switch + double fuse holders

3 Electrical schematic

A: general purpose; **B**: high performance

4 Components value (refer Filter selection table)

H: Cx=0.22uF

5 Grounded choke (optional)

G: Lg= 400uH

6 Bleeder resistor (optional)

R: R= 1M ohm; 1/4W min.

7 Output connections (refer Output terminal)

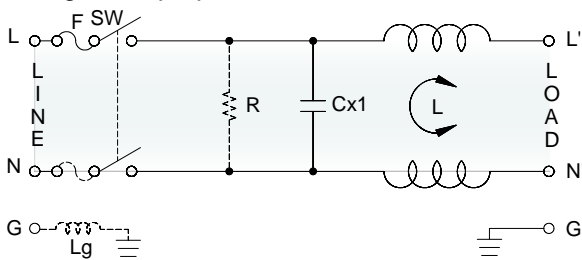
Q: fast-on tab (6.3mm)

8 Type of switch

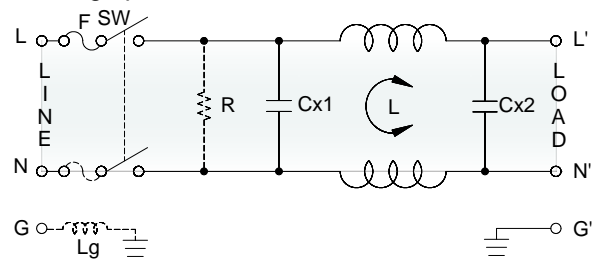
B: switch with black rocker
R: switch with illuminated red rocker
G: switch with illuminated green rocker

Electrical Schematic •

• **A**: general purpose

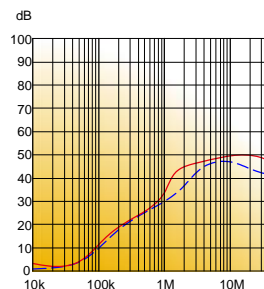


• **B**: high performance

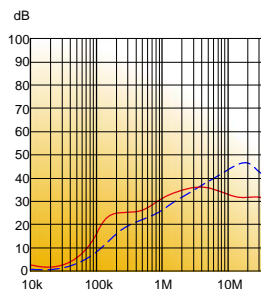


Filter Attenuation Insertion loss (dB) in 50 ohm system CISPR 17 (for reference only)

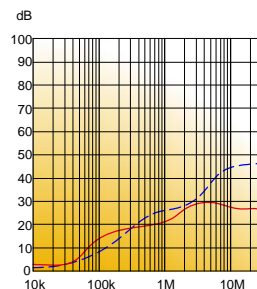
■ 1A~3A



■ 4A~6A



■ 8A~10A



Common mode / Asymmetric (L-G) ————
 Differential mode / Symmetric (L-L) - - - - -

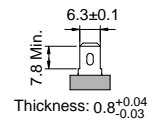
Filter Selection Table ●

Filter Part No.	Rated Current @50°C [A]	Leakage Current @250VAC/50Hz [μA]	Inductance @10KHz, 0.25V [mH]	Capacitance		
				Cx1 [uF]	Cx2 [uF]	Cy [nF]
A: general purpose						
01SS6A-.AH..-QP.	1	5	7.5	0.22	—	—
02SS6A-.AH..-QP.	2	5	5.5	0.22	—	—
04SS6A-.AH..-QP.	4	5	2	0.22	—	—
06SS6A-.AH..-QP.	6	5	0.8	0.22	—	—
10SS6A-.AH..-QP.	10	5	0.4	0.22	—	—
B: high performance						
01SS6A-.BH..-QP.	1	5	7.5	0.22	0.22	—
02SS6A-.BH..-QP.	2	5	5.5	0.22	0.22	—
04SS6A-.BH..-QP.	4	5	2	0.22	0.22	—
06SS6A-.BH..-QP.	6	5	0.8	0.22	0.22	—
10SS6A-.BH..-QP.	10	5	0.4	0.22	0.22	—

Output Terminal

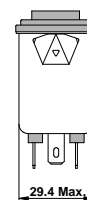
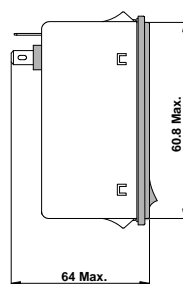
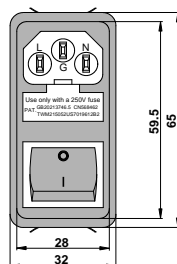
(unit: mm)

- Q: fast-on tab based on UL310 standard



Mechanical Drawing (unit: mm) ●

- snap-in mount



Suggested Panel Cutout
(Mounting from front)

