

Features

- Standard conducted attenuation performance
- Single stage power line filter
- Current rating 10A~30A
- Various output connections
- Practical solution for general devices

Marketing Applications

- Single-phase power supplies
- Electrocardiograph
- Electrosurgical generator
- Network technology
- Medical device (not body-coupled)

Numbering System

1 SS4 A - 2 3 - 4 5 - 6

1 Rated current

10,15,20,30

2 Electrical schematic

1A,1B

3 Type of case (refer Mechanical drawing)

G1

4 Components value (refer Filter selection table)

B: $C_x=0.1\mu F$

Blank: $C_x=0.22\mu F$

5 Bleeder resistor (optional, refer Filter selection table)

R

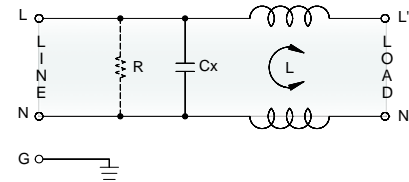
6 Output connections (refer Output terminal)

Q: fast-on tab (6.3mm)

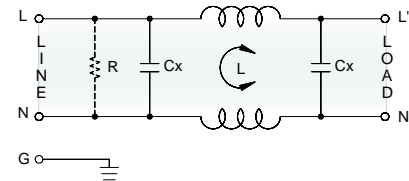
S: screw (M4)

Electrical Schematic

1A



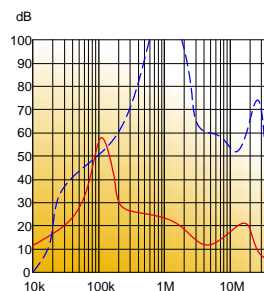
1B



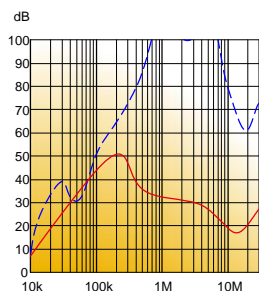
Filter Attenuation

Insertion loss (dB) in 50 ohm system CISPR 17 (for reference only)

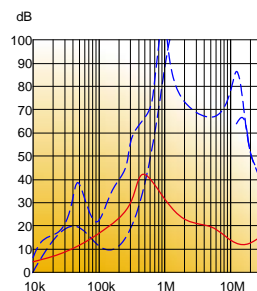
10A



15A~20A






30A



Common mode / Asymmetric (L-G) ————
 Differential mode / Symmetric (L-L) - - - - -

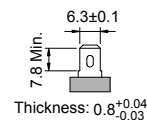
Filter Selection Table ●

Filter Part No.	Rated Current @50°C [A]	Leakage Current @250VAC/50Hz [μA]	Inductance @10KHz, 0.25V [mH]	Capacitance		Resistor R [Ω]	Output terminal		
				Cx [μF]	Cy [nF]				
1A:									
10SS4A-1AG1-B.	10	5	4	0.1	—	1M	-Q	-S	—
15SS4A-1AG1-B.	15	5	3	0.1	—	1M	-Q	-S	—
20SS4A-1AG1-B.	20	5	2	0.1	—	1M	-Q	-S	—
1B:									
10SS4A-1BG1-.	10	5	4	0.22	—	2.2M	-Q	-S	—
15SS4A-1BG1-.	15	5	3	0.22	—	2.2M	-Q	-S	—
20SS4A-1BG1-.	20	5	2	0.22	—	2.2M	-Q	-S	—
30SS4A-1BG1-.	30	5	1.5	0.22	—	2.2M	-Q	-S	—

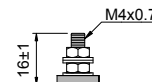
Output Terminal

(unit: mm)

- **Q:** fast-on tab based on UL310 standard

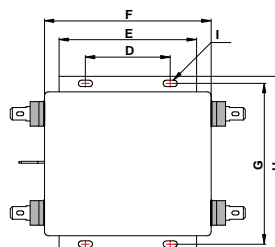
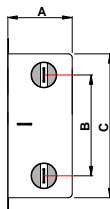


- **S:** screw based on ISO4032 standard



Mechanical Drawing (unit: mm) ●

- G type



Case	G1
A	38.6
B	48.5
C	83.6
D	51
E	79
F	98
G	96.5
H	105
I	4-Ø4x6.5