

### Features

- General conducted attenuation performance
- Compact design, lower cost
- With IEC320 AC socket
- Current rating 10A
- Practical solution for general devices

### Marketing Applications

- IPC
- Claw machine
- UPS
- SMPS
- Power supply

### Numbering System

**1** SS1 **2** - P **3** **4** **5** - **6**

**1** Rated current  
10

**2** Electrical schematic  
**Blank:** standard

**3** Components value (refer Filter selection table)  
**6:** Cx=0.1uF, Cy=2.2nF

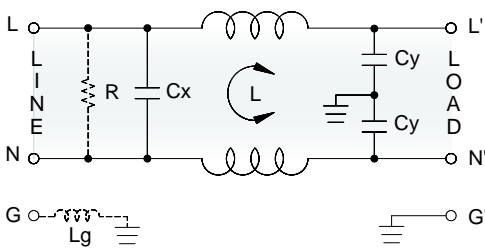
**4** Grounded choke (optional)  
**G:** Lg= 100uH

**5** Bleeder resistor (optional)  
**R:** R= 1M ohm; 1/4W min.

**6** Output connections (refer Output terminal)  
**Q:** fast-on tab (6.3mm)

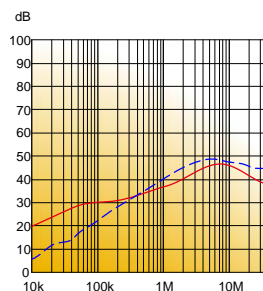
### Electrical Schematic •

• **Blank:** standard





### Filter Attenuation Insertion loss (dB) in 50 ohm system CISPR 17 (for reference only)

■ 10A



Common mode / Asymmetric (L-G) ————  
Differential mode / Symmetric (L-L) - - - - -

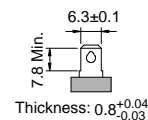
## Filter Selection Table •

| Filter Part No.        | Rated Current<br>@50°C<br>[A] | Leakage Current<br>@250VAC/50Hz<br>[μA] | Inductance<br>@10KHz,0.25V<br>[mH] | Capacitance |            | Output terminal   |   |
|------------------------|-------------------------------|---|------------------------------------|-------------|------------|---|---|
|                        |                               |   |                                    | Cx<br>[μF]  | Cy<br>[nF] |  |  |
| <b>Blank:</b> standard |                               |   |                                    |             |            |   |   |
| 10SS1-P6..             | 10                            | 450                                     | 0.3                                | 0.1         | 2.2        | -Q  | -   |

## Output Terminal

(unit: mm)

- **Q:** fast-on tab based on UL310 standard



## Mechanical Drawing (unit: mm)

- snap-in mount

