

Features

- General conducted attenuation performance
- Easy to install, compact size
- Current rating 1A~15A
- With good HF coupling to the equipment housing
- With PCB through hole pins output terminals

Marketing Applications

- Surveillance system
- Test and measurement equipment
- Rack mounting equipment
- EDP and office equipment
- Medical device (not body-coupled)

Numbering System

1 SS2 **2** - **3** **4** **5**

1 Rated current

01,03,06,10,15

2 Electrical schematic

Blank: standard

3 Type of case (refer Mechanical drawing)

P,P1

4 Components value (refer Filter selection table)

S: Cx=0.1uF, Cy=2.2nF

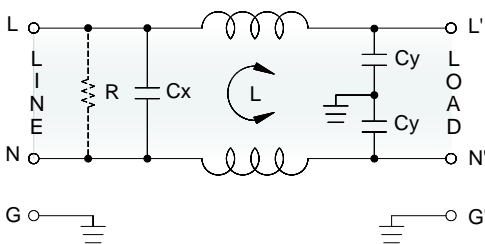
B: Cx=0.1uF, Cy=3.3nF

5 Bleeder resistor (optional)

R: R= 1M ohm; 1/4W min.

Electrical Schematic •

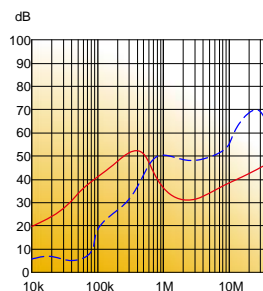
• Blank: standard



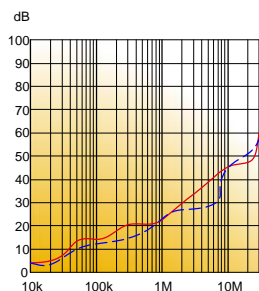
Filter Attenuation

Insertion loss (dB) in 50 ohm system CISPR 17 (for reference only)

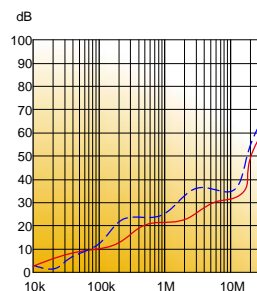
■ 1A~3A



■ 6A~10A



■ 15A



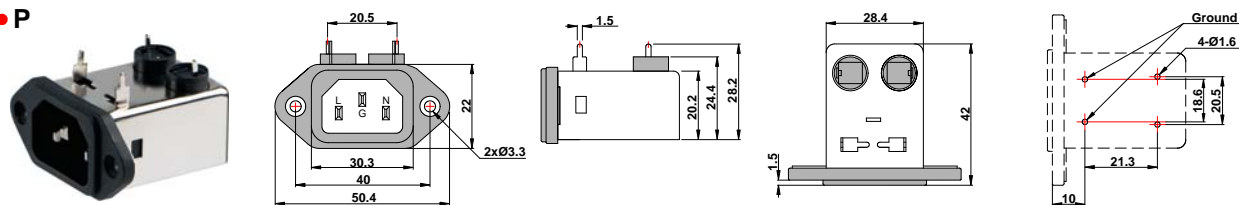
Common mode / Asymmetric (L-G) ————
 Differential mode / Symmetric (L-L) - - - - -

Filter Selection Table ●

Filter Part No.	Rated Current @50°C [A]	Leakage Current @250VAC/50Hz [μA]	Inductance @10KHz,0.25V [mH]	Capacitance Cx Cy [uF] [nF]	
Blank: standard					
01SS2-.S..	1	450	6.5	0.1	2.2
03SS2-.S..	3	450	2.5	0.1	2.2
06SS2-.S..	6	450	0.8	0.1	2.2
10SS2-.S..	10	450	0.2	0.1	2.2
15SS2-.S..	15	450	0.2	0.1	2.2
01SS2-.B..	1	600	3.7	0.1	3.3
03SS2-.B..	3	600	1.8	0.1	3.3
06SS2-.B..	6	600	0.8	0.1	3.3
10SS2-.B..	10	600	0.3	0.1	3.3
15SS2-.B..	15	600	0.2	0.1	3.3

Mechanical Drawing (unit: mm)

● P



● P1

