

### Features

- Standard conducted attenuation performance
- With DPST rocker switch
- Front mounting
- Current rating 1A~10A
- With IEC320 AC socket and switch

### Marketing Applications

- UPS
- Power line communications
- Network technology
- Surveillance system
- EDP system

### Numbering System

**1** SS3 **2** - **3** S **4** **5** **6** - **7** (**8**)

**1** Rated current

01,02,04,06,10

**2** Electrical schematic

Blank: standard

**3** Additional schematic (optional)

A: high performance

**4** Components value (refer Filter selection table)

S: Cx=0.1uF, Cy=2.2nF  
U: Cx=0.1uF, Cy=0.47nF

**5** Grounded choke (optional)

G: Lg= 100uH

**6** Bleeder resistor (optional)

R: R= 1M ohm; 1/4W min.

**7** Output connections (refer Output terminal)

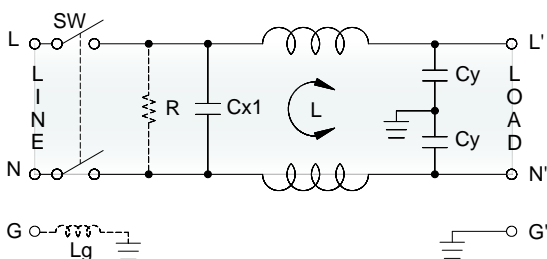
Q: fast-on tab (6.3mm)  
W: with wired (100mm)

**8** Type of switch

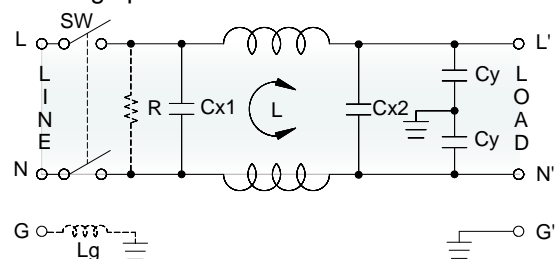
B: switch with black rocker  
R: switch with illuminated red rocker  
G: switch with illuminated green rocker

### Electrical Schematic

Blank: standard



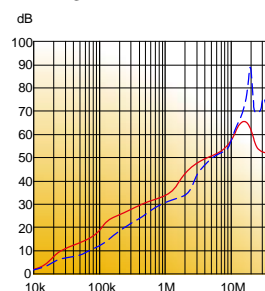
A: high performance



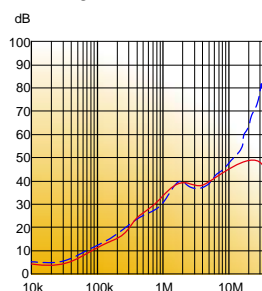
### Filter Attenuation

Insertion loss (dB) in 50 ohm system CISPR 17 (for reference only)

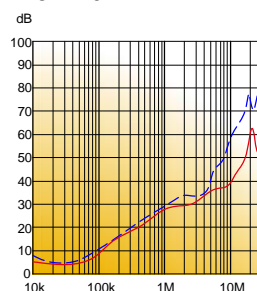
1A~3A



4A~6A



8A~10A



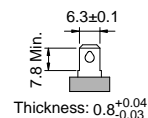
Common mode / Asymmetric (L-G) ————  
Differential mode / Symmetric (L-L) - - - -

## Filter Selection Table •

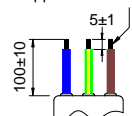
Filter Part No.	Filter PRJ No.	Rated Current @50°C [A]	Leakage Current @250VAC/50Hz [µA]	Inductance @10KHz,0.25V [mH]	Capacitance		
					Cx1 [µF]	Cx2 [µF]	Cy [nF]
<b>Blank: standard</b>							
01SS3-SS..-.(.)	S013SS....D01	1	450	6.5	0.1	—	2.2
02SS3-SS..-.(.)	S023SS....D01	2	450	3.8	0.1	—	2.2
04SS3-SS..-.(.)	S043SS....D01	4	450	1.6	0.1	—	2.2
06SS3-SS..-.(.)	S063SS....D01	6	450	0.8	0.1	—	2.2
10SS3-SS..-.(.)	S103SS....D01	10	450	0.2	0.1	—	2.2
01SS3-SU..-.(.)	S013SU....D01	1	100	11	0.1	—	0.47
02SS3-SU..-.(.)	S023SU....D01	2	100	6.5	0.1	—	0.47
04SS3-SU..-.(.)	S043SU....D01	4	100	4.2	0.1	—	0.47
06SS3-SU..-.(.)	S063SU....D01	6	100	1.6	0.1	—	0.47
10SS3-SU..-.(.)	S103SU....D01	10	100	0.4	0.1	—	0.47
<b>A: high performance</b>							
01SS3-ASS..-.(.)	S013ASS....D01	1	450	6.5	0.1	0.1	2.2
02SS3-ASS..-.(.)	S023ASS....D01	2	450	3.8	0.1	0.1	2.2
04SS3-ASS..-.(.)	S043ASS....D01	4	450	1.6	0.1	0.1	2.2
06SS3-ASS..-.(.)	S063ASS....D01	6	450	0.8	0.1	0.1	2.2
10SS3-ASS..-.(.)	S103ASS....D01	10	450	0.2	0.1	0.1	2.2

## Output Terminal (unit: mm)

- **Q: fast-on tab**  
based on UL310 standard



- **W: with wired**  
stripped and tinned



## Mechanical Drawing (unit: mm)

- screw mount | slim

