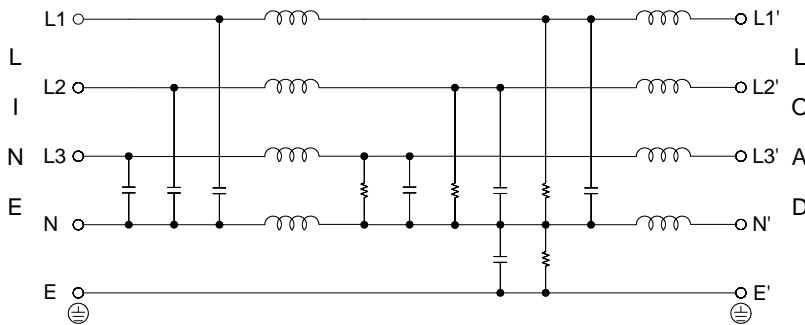


### Technical data and measuring conditions

- Rated current: 8~400A@50°C
- Max. continuous operating voltage: 3x600 / 347VAC
- Operating frequency: dc to 60Hz
- Operating temp.: -25°~ + 100° (25/100/21)
- Hi-pot. test voltage (for 2 sec.):  
P/N - E: 2750 VDC  
P to P: 2250 VDC  
P to N: 1300 VDC
- Protection category: IP20
- Flammability corresponding to: UL 94V-2 or better
- MTBF@50°C/400V(Mill-HB-217F): 360,000 hours
- Design corresponding to: UL1283, UL60939, CSA 22.2 No.8-13, IEC/EN60939
- Overload capability: 4 x rated current at switch on; 1.5 x rated current for 1 min., once per hour



### Electrical schematic



### Marketing applications

- Automation & Process Control
- High power office equipment
- Renewable energy applications

### Features

- Exceptional attenuation
- Current rating 8~400A
- 2-stage circuit is ideal for noisy environments
- Suitable for devices require minimal mounting space
- Alternative performance grade
- Optimized for industrial machinery

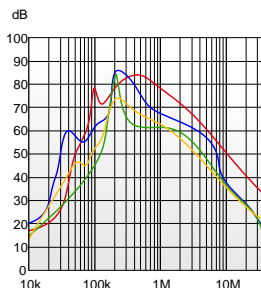
### Filter selection table

Filter PRJ No.	Rated Current @50°C [A]	Leakage Current* @600VAC/50Hz [mA]	Power Loss @25°C/50Hz [W]
08SCB80H	8	10.7	2.7
16SCB80H	16	10.7	6
25SCB80H	25	10.7	11.6
36SCB80H	36	10.7	14.8
64SCB80H	64	10.7	18.4
80SCB80H	80	10.7	18.9
120SCB80H	120	10.7	28.5
160SCB80H	160	10.7	30.7
200SCB80H	200	10.7	46.8
300SCB80HQ	300	42.1	20.3
400SCB80HQ	400	42.1	36

\*Standardized calculated leakage current acc. IEC60939 under normal operating conditions.

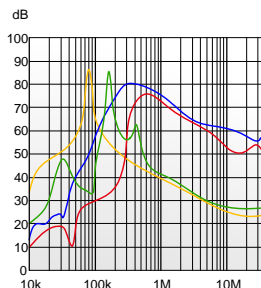
**Filter attenuation** Insertion loss (dB) in 50Ω system CISPR 17

Common mode / Asymmetrical (P-E)



8A~16A ————  
 25A~36A ————  
 64A~200A ————  
 300A~400A ————

Differential mode / Symmetrical (P-P)



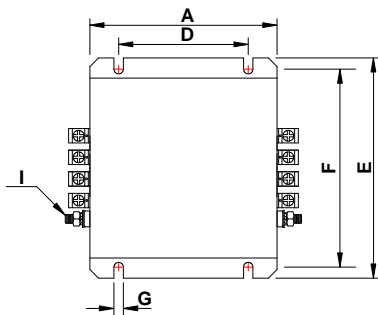
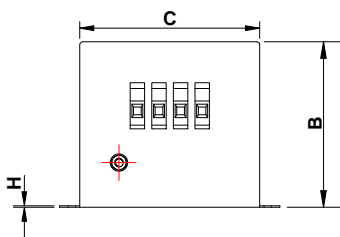
**Dimensions (unit: mm)**

Tolerances according to ISO 2768-m / EN 22768-m

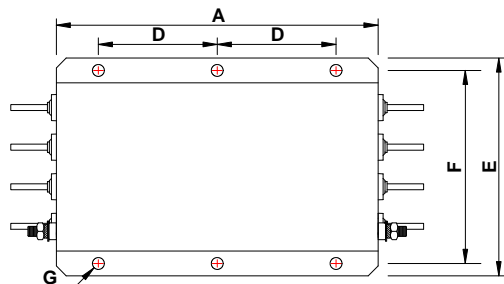
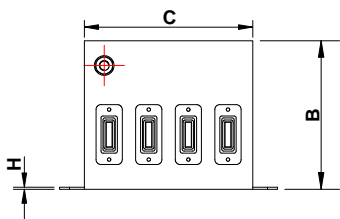
Code	8~16A	25~36A	64A	80A	120A	160~200A	300~400A
A	120	130	160	230	250	280	325
B	80	115	125	125	140	170	150
C	115	125	125	135	140	140	170
D	80	90	100	120	200	230	120
E	143	153	153	163	170	220	220
F	127.5	137.5	137.5	147.5	153.5	153.5	195
G	6.5	6.5	6.5	6.5	6.5	6.5	Ø12
H	1	1	1.2	1.2	1.2	1.2	1.5
I	M6	M6	M10	M10	M10	M10	M10
L	-	-	-	-	-	25	25
M	-	-	-	-	-	6	6
N	-	-	-	-	-	15	15
O	-	-	-	-	-	58	58
P	-	-	-	-	-	Ø10.5	Ø10.5

**Mechanical drawing**

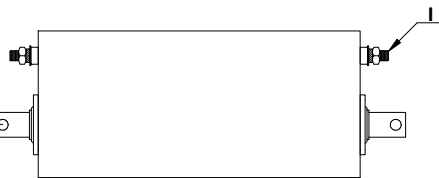
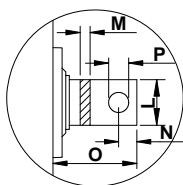
■ 8~200A



■ 300~400A



Magnifying view



**Input / Output connectors cross sections**

Input / Output connectors	8~16A	25~36A	64A	80~120A	160~200A
Solid wire	10mm <sup>2</sup>	16mm <sup>2</sup>	35mm <sup>2</sup>	50mm <sup>2</sup>	95mm <sup>2</sup>
Flex wire	6mm <sup>2</sup>	10mm <sup>2</sup>	25mm <sup>2</sup>	50mm <sup>2</sup>	95mm <sup>2</sup>
AWG type wire	AWG 8	AWG 6	AWG 2	AWG 1/0	AWG 4/0
Recom. torque	1~1.2Nm	1~1.2Nm	1.8~2Nm	2.3~2.5Nm	17~20Nm