

Features

- 3 in 1 compact power entry modules with filtered
- IEC950 appliance inlet
- Screw mount
- Current rating 1A~10A
- With IEC950 appliance inlet and fuse holder and switch

Marketing Applications

- Safety tester
- Automated optical inspection (AOI)
- Gaming machine
- Darts machine
- Server

Numbering System

1 SS6 - **2** **3** **4** **5** **6** - **7** **B** **8**

1 Rated current

01,02,04,06,10

2 Type of module

B1: socket + switch + single fuse holder
B2: socket + switch + double fuse holders

3 Electrical schematic

A: general purpose; **B**: high performance

4 Components value (refer Filter selection table)

H: Cx=0.22uF, Cy=2.2nF
I: Cx=0.22uF, Cy=3.3nF

5 Grounded choke (optional)

G: Lg= 400uH

6 Bleeder resistor (optional)

R: R= 1M ohm; 1/4W min.

7 Output connections (refer Output terminal)

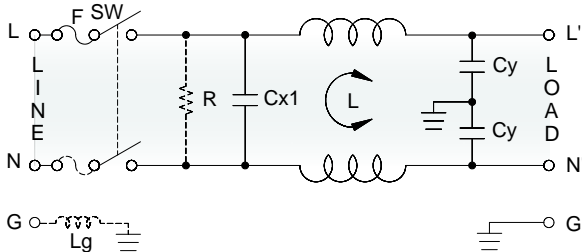
Q: fast-on tab (6.3mm)

8 Type of switch

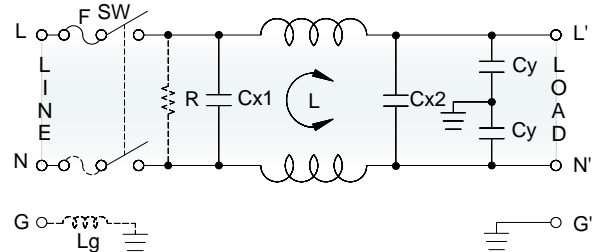
B: switch with black rocker
R: switch with illuminated red rocker
G: switch with illuminated green rocker

Electrical Schematic •

• **A**: general purpose

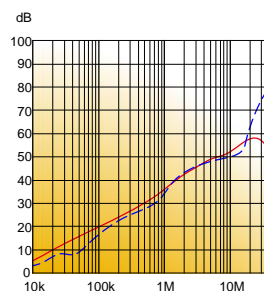


• **B**: high performance

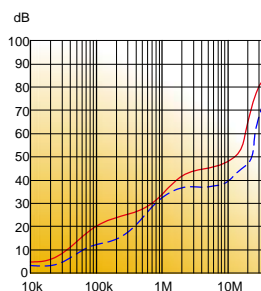


Filter Attenuation Insertion loss (dB) in 50 ohm system CISPR 17 (for reference only)

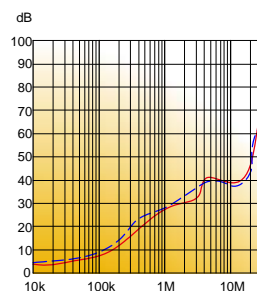
1A~3A



4A~6A



8A~10A



Common mode / Asymmetric (L-G) ————
 Differential mode / Symmetric (L-L) - - - - -

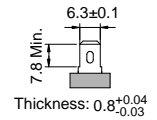
Filter Selection Table ●

Filter Part No.	Rated Current @50°C [A]	Leakage Current @250VAC/50Hz [μA]	Inductance @10KHz, 0.25V [mH]	Capacitance		
				Cx1 [uF]	Cx2 [uF]	Cy [nF]
A: general purpose						
01SS6-.AH...QB.	1	450	7.5	0.22	—	2.2
02SS6-.AH...QB.	2	450	5.5	0.22	—	2.2
04SS6-.AH...QB.	4	450	2	0.22	—	2.2
06SS6-.AH...QB.	6	450	0.8	0.22	—	2.2
10SS6-.AH...QB.	10	450	0.4	0.22	—	2.2
01SS6-.AI...QB.	1	600	10	0.22	—	3.3
02SS6-.AI...QB.	2	600	6.5	0.22	—	3.3
04SS6-.AI...QB.	4	600	2.7	0.22	—	3.3
06SS6-.AI...QB.	6	600	1.05	0.22	—	3.3
10SS6-.AI...QB.	10	600	0.4	0.22	—	3.3
B: high performance						
01SS6-.BH...QB.	1	450	7.5	0.22	0.22	2.2
02SS6-.BH...QB.	2	450	5.5	0.22	0.22	2.2
04SS6-.BH...QB.	4	450	2	0.22	0.22	2.2
06SS6-.BH...QB.	6	450	0.8	0.22	0.22	2.2
10SS6-.BH...QB.	10	450	0.4	0.22	0.22	2.2

Output Terminal

(unit: mm)

- Q: fast-on tab based on UL310 standard



Mechanical Drawing (unit: mm) ●

- screw mount | horizontal

