

### Features

- 3 in 1 compact power entry modules with filtered
- Easy to install
- Minified design with narrow body
- Current rating 1A~10A
- With IEC950 appliance inlet and fuse holder and switch

### Marketing Applications

- SMPS
- Audio & Video equipment
- Automatic data processing system
- Portable electrical and electronic equipment
- Medical device (not body-coupled)

### Numbering System

**1** SS6 - **2** **3** **4** **5** - **6** P **7**

#### 1 Rated current

01,02,04,06,10

#### 2 Type of module

**B1**: socket + switch + single fuse holder  
**B2**: socket + switch + double fuse holders

#### 3 Electrical schematic

**A**: general purpose

#### 4 Components value (refer Filter selection table)

**H**: Cx=0.22uF, Cy=2.2nF  
**I**: Cx=0.22uF, Cy=3.3nF

#### 5 Bleeder resistor (optional)

R: R= 1M ohm; 1/4W min.

#### 6 Output connections (refer Output terminal)

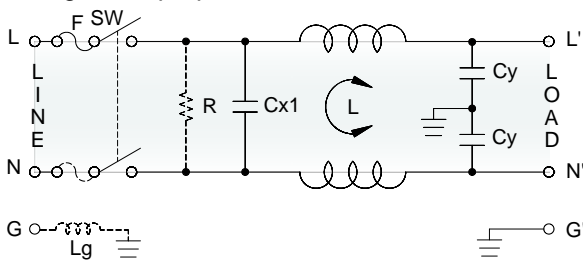
**Q**: fast-on tab (6.3mm)

#### 7 Type of switch

**B**: switch with black rocker  
**R**: switch with illuminated red rocker  
**G**: switch with illuminated green rocker

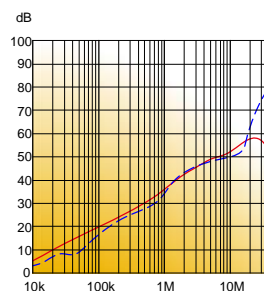
### Electrical Schematic •

- A**: general purpose

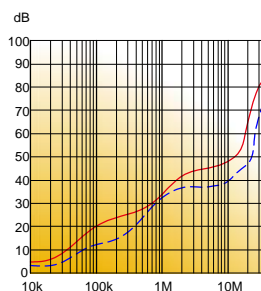


### Filter Attenuation Insertion loss (dB) in 50 ohm system CISPR 17 (for reference only)

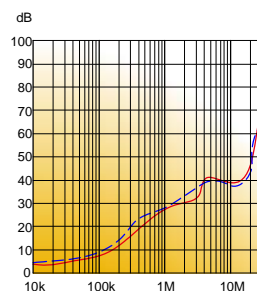
#### 1A~3A



#### 4A~6A



#### 8A~10A



Common mode / Asymmetric (L-G) ————  
 Differential mode / Symmetric (L-L) - - - - -

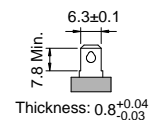
## Filter Selection Table ●

Filter Part No.	Filter PRJ No.	Rated Current @50°C [A]	Leakage Current @250VAC/50Hz [μA]	Inductance @10KHz, 0.25V [mH]	Capacitance		
					Cx1 [uF]	Cx2 [uF]	Cy [nF]
A: general purpose							
01SS6-.AH.-QP.	S016.AH.QP.D01	1	450	7.5	0.22	—	2.2
02SS6-.AH.-QP.	S026.AH.QP.D01	2	450	5.5	0.22	—	2.2
04SS6-.AH.-QP.	S046.AH.QP.D01	4	450	2	0.22	—	2.2
06SS6-.AH.-QP.	S066.AH.QP.D01	6	450	0.8	0.22	—	2.2
10SS6-.AH.-QP.	S106.AH.QP.D01	10	450	0.4	0.22	—	2.2
01SS6-.AI.-QP.	S016.AI.QP.D01	1	600	10	0.22	—	3.3
02SS6-.AI.-QP.	S026.AI.QP.D01	2	600	6.5	0.22	—	3.3
04SS6-.AI.-QP.	S046.AI.QP.D01	4	600	2.7	0.22	—	3.3
06SS6-.AI.-QP.	S066.AI.QP.D01	6	600	1.05	0.22	—	3.3
10SS6-.AI.-QP.	S106.AI.QP.D01	10	600	0.4	0.22	—	3.3

## Output Terminal

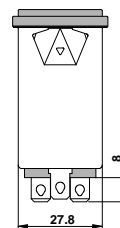
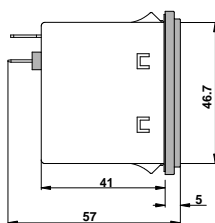
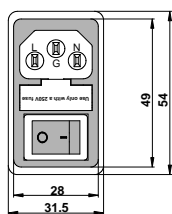
(unit: mm)

- Q: fast-on tab based on UL310 standard



## Mechanical Drawing (unit: mm) ●

- snap-in | miniature



Suggested Panel Cutout  
(Mounting from front) 4xR0.3

